

WIRING ACCESSORIES



Licence no. KM73109 and KM73110

Probably the world's best known product certification mark

Recognised as a legitimate sign of quality & safety

Only issued after the most rigorous product certification & quality management system by BSI
Plus an annual BSI factory inspection to ensure quality

Another quality brand

CED has become increasingly popular as a supplier of a comprehensive selection of reliable, high-quality final circuit devices that specifiers, end-users and installers all appreciate and trust.

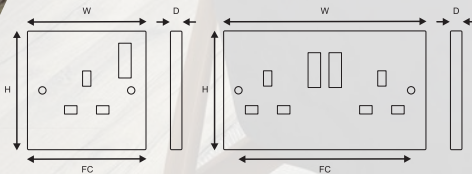
The exciting new brand "Axiom, by CED" will further support CED's national and international network of distributors and reinforce it's already strong reputation.

Axiom – a logical, established principle.

"CED has been one of the UK's leading suppliers in the field of electrical wiring systems for over 25 years".



Information: As part of our continued commitment to ensuring the quality of our products. All Axiom and CED brand wiring accessories now come with a 25 year guarantee for added peace of mind.



QUALITY ASSURANCE

The Kitemark is a registered certification mark owned and operated by BSI. It is one of the most recognised symbols of quality and safety and offers true value to consumers, businesses and procurement practices.

Standard White Range

CED brilliant white wall accessories - manufactured to highest specifications using only quality materials throughout their construction, a colour coordinated range which offers inherent safety features and consistent styling, back plates are black polycarbonate to enhance durability. 20A, 45A Switches use urea backplate to withstand higher temperatures.

We believe our products represent one of the finest quality ranges available on the market today and are confident in offering an exclusive "25 Year Guarantee" on the complete range.

All products made to BSEN specifications.

Features

- 13 A Sockets - and shutter mechanism is operated by Earth Pin or Plug.
- 20 A Switches, Connection units offer built-in knockout facility at the base to enable units to be use with or without cord outlets.
- Positive Switch Action - Prevents balancing between "On" & "Off" position and gives reliable indication of the contact position.
- Sockets, Connection Units of DP range have Red colour markings on the switch for clear & easy identification of the on position.
- Urea Formaldehyde compound used to offer longer life and easy to clean.
- Switch Rating - Switches have 10AX for inductive load.
- Easy Wiring - All terminal screw sockets face upwards
- Uses silver contacts for longer life.
- Larger Terminals - Provide positive clamping of conductors.
- Individually Packed - All products are individually packed in their own plastic bag, keeping the product clean for the end user.

Information: All information shown in this catalogue is correct at time of going to press, however we reserve the right to alter or amend the data without prior notice. If you are in doubt please ask our sales team for assistance before ordering.



- BSEN 1363 AC only
- Contact Gap - 3mm
- Minimum Depth - Plastic/PVC box - 25mm
- Terminal Capacity - 4x2.5mm² (13A only)
- 2 Earth Terminals for easy installation - Single Pole Wider Switch & Double Pole - CEDSSK2 (one earth terminal)
- Supplied with M3.5 x 30mm fixing screws
- Front Plate Depth - Single Pole - 9mm & Double Pole - 13mm
- Kite Mark approved, license no. KM73109



Suitable for 'Commercial & domestic use'



CLASSIC WHITE

Socket Outlets

Dimensions:-	Type	HxWxD	Fixing Centre
	1G	86x86x9mm	60.3mm
	2G	86x146x9mm	120.6mm

Sockets 2A, 5A & 13A - BS 1363 pt2

Code	Description	Kitemark	Min/Box
Switched			
CEDSSK2ES	Twin Switched Socket 13A - Single Pole (Economy)	✓	10/100
CEDSSK2	2 Gang Switched Socket 13A - Single Pole (with 2 Earth Terminals)	✓	10/100
CEDSSK1	1 Gang Switched Socket 13A - Single Pole	✓	10/200
Unswitched			
CEDSK2	2 Gang Unswitched Socket 13A - Single Pole	✓	10/100
CEDSK1	1 Gang Unswitched Socket 13A - Single Pole	✓	10/200

Switched with Neon

CEDSSK2N	2 Gang Switched Socket 13A - Single Pole with Neon	✓	10/100
CEDSSK1N	1 Gang Switched Socket 13A - Single Pole with Neon	✓	10/200
2A, 5A & 15A			
CEDSK1/2A	1 Gang 2A Socket 3 Pin Round to BS546	✓	10/300
CEDSK1/5A	1 Gang 5A Socket 3 Pin Round to BS546	✓	10/300
CEDSK1/15A	1 Gang 15A Socket 3 Pin Round to BS6541	✓	10/300

Switched Sockets - Double Pole (c/w with 2 Earth Terminals) - BS 1363 pt2

CEDSSK2DP	Twin Switched Socket 13A - Double Pole	✓	10/100
CEDSSK1DP	Single Switched Socket 13A - Double Pole	✓	10/200

USB Switched Sockets - Single Pole (c/w with 2 Earth Terminals) - BS 1363 pt2

CEDSSK2USB	2 Gang Switched Socket c/w USB Charging Ports	✓	10/200
------------	---	---	--------

Single Socket to Multiple Converter Sockets - BS1363 pt2

Code	Description	Dimensions (mm)	Min/Box
CEDCS1-2	Switched Socket Converter 1 Gang to 2 Gang	146x82x20	10/100
CEDCS1-3	Switched Socket Converter 1 Gang to 3 Gang	195x82x20	10/100
CEDCS1-4	Switched Socket Converter 1 Gang to 4 Gang	240x82x20	10/100



CLASSIC WHITE

10A & 20A Switches



CEDES12



CEDES22



CEDES32



CEDES42



CEDES62



CEDESBELL



CEDFI3P



CEDESARC



CEDES20

10A (X Rated)

- BS3676 AC only BSEN 60669
- 10A (X rated) suitable for inductive load
- FI3P AC - to BSEN 60947-3-1992
- Supplied with M3.5 x 25mm fixing screws
- 2 way switches can be wired as 1 way or 2 way
- Minimum Depth - Metal/Plastic/PVC Box 16mm
- Terminal Capacity - 3x1.5mm²

D.P. SWITCHES 20A

- Three Pole Isolators provide isolation of fans for maintenance or repair without isolation of complete circuit Kitemark approved, licence no. KM73110
- BS3676 AC only BSEN 60669
- Flex outlet at lower edge by knockout - choice of use
- Supplied with M3.5 x 30mm fixing screws
- Cable CIA accommodates 2.5mm² flexible cable
- Minimum Depth - Metal/Plastic/PVC Box 25mm
- Terminal capacity - 3 x 2.5mm², 4 x 2.5mm² (Earth)
- Kite Mark approved, **licence no. KM73110**



Switches 10A AX - BS3676 BSEN 60669

Code	Description	Kitemark	Min/Box
Single Plate			
CEDES11	Switch 1 Gang 1 Way	✓	10/300
CEDES12	Switch 1 Gang 2 Way	✓	10/300
CEDES22	Switch 2 Gang 2 Way	✓	10/300
CEDES32	Switch 3 Gang 2 Way	✓	10/300
CEDESINT	Intermediate Switch		10/300
Twin Plate			
CEDES42	Switch 4 Gang 2 Way	✓	10/100
CEDES62	Switch 6 Gang 2 Way	✓	10/100
Bell Push			
CEDESBELL	Bell Push 1 Gang	✓	10/300
CEDESPRESS	Press Switch 1 Gang	✓	10/300
Fan Isolator			
CEDFI3P	Fan Isolator Switch 3 Pole	✓	10/300
Architrave			
CEDESARC	Architrave Switch 1 Gang 2 Way	✓	20/500
CEDESARC2	Architrave Switch 2 Gang 2 Way	✓	20/500
CEDESARCBELL	Architrave Switch 1 Gang Bell Push	✓	20/500



CEDES20



CEDES20N

Switches 20A - Double Pole - BS3676 BSEN 60669

Code	Description	Kitemark	Min/Box
CEDES20	Switch 20A DP	✓	10/200
CEDES20N	Switch 20A DP + Neon	✓	10/200
CEDKS1	Key switch 20A DP		10/200

Type	HxWxD	Fixing Centre
1, 2 & 3G	86x86x9mm	60.3mm
4 & 6G	86x146x9mm	120.6mm
SARC	86x32x9mm	60.3mm (Vertical)
SARC2	145x30x20mm	120mm



Horizontal Cooker Switches 45A + Sockets

- BS4177 AC only
- 45A D.P. main switch with 13A socket
- Supplied with M3.5 x 30mm fixing screws
- Terminal capacity - 2 x 10mm², 1 x 10mm² each
- Kite Mark approved, **licence no. KM73110**

Dimensions:-	Type	HxWxD	Fixing Centre
	2G	86x146x13mm	120.6mm

Vertical Cooker Switches 45A

- BS4177 AC only
- 45A D.P. main switch with 13A socket
- Supplied with M3.5 x 30mm fixing screws
- Terminal capacity - 2 x 10mm², 1 x 10mm² each
- Kite Mark approved, **licence no. KM73110**

Dimensions:-	Type	HxWxD	Fixing Centre
	2G	86x146x13mm	120.6mm

CLASSIC WHITE

45A Switches (Double Pole)

Cooker Switches & Cooker Outlet Plates 45A Double Pole - BS3676 BSEN 60669



- BS 3676 AC only
- Supplied with M3.5 x 30mm fixing screws
- Cable cIa accommodates 4mm² to 16mm² cable for 45A
- Terminal capacity - 3 x 2.5mm² for 20/25A
- Kite Mark approved, **licence no. KM73110**

Dimensions:-	Type	HxWxD	Fixing Centre
	45A	86x86x13mm	60.3mm
	45A Tall	86x146x13mm	120.6mm (Vertical)



CEDCS45SK



CEDCS45SKN



CEDCS45



CEDCS45N



CEDCSD45



CEDCSD45N

Cooker Switches 45A Horizontal - BS4177

Code	Description	Kitemark	Min/Box
CEDCS45SK	Cooker Switch Socket 45A DP	✓	5/50
CEDCS45SKN	Cooker Switch Socket 45A DP + Neon	✓	5/50

Cooker Switches & Flex Outlet Plates 45A Double Pole - BS3676 BSEN 60669

Code	Description	Kitemark	Min/Box
Single Plate			
CEDCS45	Cooker Switch 45A DP Square	✓	10/100
CEDCS45N	Cooker Switch 45A + Neon DP Square	✓	10/100
Double Plate Tall			
CEDCSD45	Cooker Switch 45A DP Tall	✓	5/100
CEDCSD45N	Cooker Switch 45A DP + Neon (Tall)	✓	5/100
Cooker Outlet Plate			
CEDCOP45	Cooker Outlet Plate 45A BS5733		10/100



CEDCOP45



Features & Benefits

- Flex outlet at lower edge by knockout (choice of use)
- Supplied with M3.5 x 30mm fixing screws
- Cable cA accommodates 2.5mm² flexible cable
- Fitted with 13A Fuse unless specified otherwise
- Minimum Depth - Metal/Plastic/PVC Box 25mm
- Terminal capacity - 3 x 2.5mm², 4 x 2.5mm² (Earth)
- Kite Mark approved, licence no. KM73109

Dimensions:-	Type	HxWxD	Fixing Centre
	1G	86x86x13mm	60.3mm



13A Connection Units & Flex Outlets

Double Pole - BS 1363 pt4-1995

Code	Description	Kitemark	Min/Box
13A Connection Units			
CEDSPS	Fused Spur Switched Bottom K.O. 13A DP	✓	10/200
CEDSPN	Fused Spur Bottom K.O. + Neon	✓	10/200
CEDSPSN	Fused Spur Switched Bottom K.O. + Neon 13A DP	✓	10/200
CEDSP	Fused Spur 13A Bottom K.O.	✓	10/200
3A & 5A Connection Units			
CEDSPSN/5A	Fused Spur Switched + Neon 5A Fuse DP		10/200
CEDSP/3A	Fused Spur Unswitched 3A Fuse for Burglar Alarm		10/200
Connection Units with Flex Outlet			
CEDSPSFO	Switched Spur with Front Flex Outlet DP	✓	10/200
CEDSPSNFO	Switched Spur with Front Flex Outlet + Neon DP	✓	10/200
Flex Outlet Plates			
CEDFOP20	Flex Outlet Plate 20A to BS5733		10/200



CEDSPN



CEDSPSFO



CEDSPSN



CEDFOP20



DR400/11W



DR250/22W



DP1000/12W



DP400/32W



CLASSIC WHITE

Rotary & Push Dimmers - White

Features & Benefits

- BS EN60669 Option of 250W/400W/1000W
- 3 & 4 Gang in Double Plate
- 2 way dimmers are suitable for 1 & 2 way switching
- Suitable for Tungsten Filament only
- Minimum wattage dimming can be operated - 40W
- Supplied with M3.5 x 30mm fixing screws
- Minimum Depth - Metal/Plastic/PVC Box 25mm Display clam packing

Dimensions:-	Type	HxVxD	Fixing Centre
	1G/2G	86x86x10mm	60.3mm
	3G/4G	86x146x10mm	120.6mm

Rotary Dimmers - White

Code	Description	Min/Box
DR400/11W	1 Gang 1 Way Rotary Dimmer 400W - White Knob	10/100
DR250/21W	2 Gang 1 Way Rotary Dimmer 250W - White Knob	10/100

Push Dimmers - White

Code	Description	Min/Box
250W		
DP250/12W	1 Gang 2 Way Push Dimmer 250W - White Knob	10/100
DP250/22W	2 Gang 2 Way Push Dimmer 250W - White Knob	10/100
DP250/32W	3 Gang 2 Way Push Dimmer 250W - White Knob	5/50
DP250/42W	4 Gang 2 Way Push Dimmer 250W - White Knob	5/50
400W		
DP400/12W	1 Gang 2 Way Push Dimmer 400W - White Knob	10/100
DP400/22W	2 Gang 2 Way Push Dimmer 400W - White Knob	10/100
DP400/32W	3 Gang 2 Way Push Dimmer 400W - White Knob	10/100
1000W Single Plate		
DP1000/12W	1 Gang 2 Way Push Dimmer 1000W - White Knob	10/100

Not suitable for LED use
see page 49

CLASSIC WHITE

Satellite & Telephone Outlets (Standard & fully Screened)



TV, FM Satellite Outlet

Coaxial Socket Outlets BS 3041

- Isolated unit - for use in multi-outlet commercial system providing safety isolation
- TV-FM outlet - for direct connection to single satellite TV or FM coaxial down leads
- Suitable for VHF/UHF TV & VHF radio
- Both outlets accept standard coaxial plugs to BS3041
- Supplied with M3.5 x 30mm fixing screws
- Minimum depth of Metal/Plastic/PVC Box 25mm

Dimensions:- Type 1G HxWxD 86x86x9mm Fixing Centre 60.3mm



CEDTVS1



CEDSFO



CEDTVS2

TV, FM Satellite Outlet Coaxial Socket Outlets BS 3041

Code	Description	Dimensions HxWxD (mm)	Fixing Centre (mm)	Min/Box
TV Only				
CEDTVS1	T.V. Socket 1 Gang	86 x 86 x 9	60.3	10/300
CEDTVS1/I	T.V. Outlet 1 Gang Isolated	86 x 86 x 9	60.3	10/300
CEDTVS2	T.V. Outlet 2 Gang	86 x 86 x 9	60.3	10/300
TV FM				
CEDSTVFM	TV Satellite & FM Socket Outlet	86 x 86 x 9	60.3	10/300
Satellite				
CEDSFO	Satellite F Socket Outlet	86 x 86 x 9	60.3	10/300
CEDSTVFO	T.V. & Satellite F Socket Outlet	86 x 86 x 9	60.3	10/300

Telephone Range

We offer a range of telephone accessories products designed in attractive white finish and manufactured in high grade ABS materials, the range is manufactured to the highest specifications and complies to latest BABT U.K. standards.



TELIDCT



TELSM1



TELFM1



TELAP2



TEL5M

CLASSIC WHITE

Telephone Accessories

Telephone Sockets - IDC Type (Insertion Type)

- All sockets have IDC type connectors
- Surface sockets supplied with mounting box & screws
- Surface mounting sockets are smaller than flush
- Supplied with M3.5 x 30mm fixing screws
- Minimum depth of Metal/Plastic/PVC Box 25mm (Flush Fitting only)
- Terminal capacity - 2 x 0.68mm² to BT specification

Dimensions:-	Type	Dimensions	Fixing Centre
	Surface	68x68x29mm	60.3mm (Box supplied)
	Flush	86x86x9mm	60.3mm

Code	Description	Dimension (mm)	Box/Qty
TELSM1	Telephone Surface Master Socket	68x68x29	20/400
TELSS1	Telephone Surface Slave Socket	68x68x29	20/400
TELFM1	Telephone Flush Master Socket	86x86x9	10/300
TELFS1	Telephone Flush Slave Socket	86x86x9	10/300

Note: Use masters for main entry & slave for extensions.

Code	Description	Dimension LxVxH (mm)	Box/Qty
TELIDCT	Insertion Tool IDC Type	88x18x5	10
TELAP2	Telephone Socket Doubler 1 in 2 out	50x21x20	1/20
TELAP3	Telephone Socket Tripler 1 in 3 out	54x23x25	1/20

Code	Description	Cable Length	Box/Qty
TEL3M	Telephone Extension Cable 3Mtr	3Mtr	1/10
TEL5M	Telephone Extension Cable 5Mtr	5Mtr	1/10
TEL10M	Telephone Extension Cable 10Mtr	10Mtr	1/10
TEL15M	Telephone Extension Cable 15Mtr	15Mtr	1/10
TEL20M	Telephone Extension Cable 20Mtr	20Mtr	1/10
TELEK15	Telephone Extension Kit 15Mtr Includes (Cable, Clips & Insertion Tool)	15Mtr Socket 68x68x29mm	1

Telephone Tools, Adaptors & Plugs

- 4 Pins Adaptors 2 & 3 Way
- Plug with 4 Pins
- Tools for insertion of cable
- Crimping Tool for Plugs
- Packed in plastic bag

Telephone Extension Leads & Kits

- Male to Female Extension Lead
- Available In - 3Mtrs, 5Mtrs, 10Mtrs, 15Mtrs & 20Mtrs
- Supplied with Header Card
- CW 1308 cable used
- 15Mtr kit contains:- Socket, Clips, Cable & Insertion Tool

CLASSIC WHITE

Blank Plates & Time Lag Switches

Blank Plates

- BS 5733
- Supplied with M3.5 x 25mm long fixing screws
- Minimum Depth - Metal/Plastic/PVC Box 16mm
- Designed to cover 1G & 2G Flush Boxes

Dimensions:-	Type	HxWxD	Fixing Centre
	1G	86x86x9mm	60.3mm
	2G	86x146x9mm	120.6mm



Code	Description	Box/Qty
CEDBP1	Blank Plate 1 Gang	20/600
CEDBP2	Blank Plate 2 Gang	20/400



STLE



STL

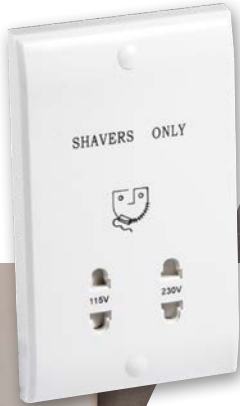
Time Lag Switch Electronic & Mechanical

- BSEN 60730-2-7 UKCA, CE, LVD, LVE
- 250v 10A 5A Fluorescent Lighting (Max 6 Fittings) Mounting 25mm Single Box
- Timing 10 secs to 10 minutes
- Impact Resistance
- No Neutral Connection - Easy Installation
- Replace existing 1G Wall Switch
- Ideal for Staircases & Corridors
- Electronic:- 10A Normal & 5A Fluorescent
- Mechanical:- 6A Normal & 3A Fluorescent
- 3 Years Warranty

Dimensions:-	Type	(W)x(H)x(D) (mm)	Fixing Centre (mm)	Plate Colour	Depth
	Electronic	80x80x16	60.3	White	STLE 15mm
	Mechanical	83x83x20	60.3	White	STL 8mm



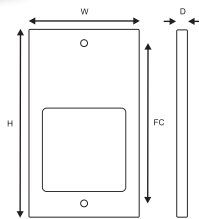
Code	Description	Depth	Box/Qty
STL	Time Lag Switch Fluorescent ELKAY (400A) 10 secs - 10 mins. 10A Normal, 3A Fluorescent	8mm	1
STLE	Electronic Time Lag Switch 10A Incandescent 6A Fluorescent Fits 25mm Box	15mm	1



WSS2DV

CLASSIC WHITE

Shaver Sockets Dual Voltage 110/240v



Features & Benefits

- BSEN 61558-pt2 n Input 240v AC - Output 240v or 110v
- Terminal Capacity - 2 x 2.5mm²
- Maximum Depth - Metal/Plastic/PVC Box 47mm
- WSS2DV coordinates with moulded range
- Supplied with M3.5 x 30mm fixing screws

Dimensions:-	(W)x(H)x(D)	Fixing Centre
Type	(mm)	(mm)
2G	146x86x13	120.6mm (Vertical)



Dimensions
86 x 86 x 13mm
Fixing Centre
60.3mm
Minimum Box Depth
47mm

Code: WSS1DV

Shaver Socket Dual Voltage 110/240v to BS4573

- 2 Gang
- Input 240v AC - Output 240v or 110v
- Terminal Capacity - 2 x 2.5mm²
- Supplied with M3.5 x 30mm fixing screws
- BSEN 61558-pt2



Minimum / Box quantity: 1/20
Minimum order quantity: 1



Dimensions
146 x 86 x 13mm
Fixing Centre
120.6mm (vertical)
Minimum Box Depth
47mm

Code: WSS2DV

Dual Voltage Shaver Sockets Slim

- 2 Gang
- WSS2DV coordinates with moulded range
- Input 240v AC - Output 240v or 110v
- Terminal Capacity - 2 x 2.5mm²
- Supplied with M3.5 x 30mm fixing screws
- BSEN 61558-pt2



Minimum / Box quantity: 1/20
Minimum order quantity: 1

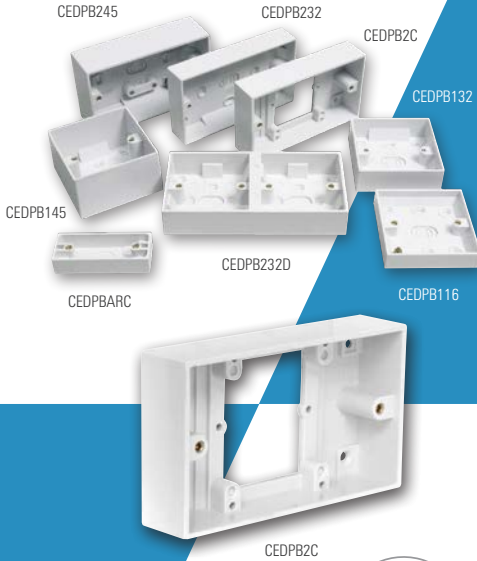
CLASSIC WHITE

Patress Boxes / Junction Boxes & Connector Blocks

Features & Benefits

- BS-5733 Matches CED - Wiring Accessories Range
- Manufactured from Urea Formaldehyde
- Knockout provided on the side & base for cable entry
- 45mm deep box provided with c/a to accommodate 4mm² - 16mm² cable
- Supplied in 16mm (single) 25, 32 & 45mm depths (Single & Twin)
- 16mm box supplied with earth terminal

Dimensions:-	Type	HxWxD	Fixing Centre
	1G Single	87x87x16, 25, 32 & 45mm	60.3mm
	2G Twin	148x87x25, 32 & 45mm	120.6mm
	2G Dual	88x176x32mm	60.3mm (Horizontal/Vertical)



Code	Description	Box/Qty
16mm Single		
CEDPB116	Patress Box 1 Gang 16mm Single	20/600
25mm Single & Twin		
CEDPB125	Patress Box 1 Gang 25mm Single	10/300
CEDPB225	Patress Box 2 Gang 25mm Twin	10/200
32mm Single, Twin & Dual		
CEDPB132	Patress Box 1 Gang 32mm Single	10/300
CEDPB232	Patress Box 2 Gang 32mm Twin	10/200
CEDPB232D	Patress Box Dual 32mm Deep	5/150
CEDPB2C	Patress Box 1G - 2G - 32mm Conversion	10/100
45mm Single, Twin		
CEDPB145	Patress Box 1 Gang 45mm Single	10/200
CEDPB245	Patress Box 2 Gang 45mm Twin	10/150
32mm Architrave		
CEDPBARC	Patress Box for 1 Gang Architrave Switch	20/600
CEDPBARC2	Patress Box for 2 Gang Architrave Switch	10/300



Junction Boxes (White/Black) BS6220



CEDJB20W



CB100SP

Code	Description	Min/Box
Standard		
CEDJB5W/B	5A Junction Box 3 Term. to BS6220	20/400
CEDJB20W/B	20A Junction Box 4 Term. to BS6220	10/400
CEDJB30W/B	30A Junction Box 3 Term 2.5mm to BS6220 (Large size)	10/100
20A 6 Terminal Junction Box		
CEDJB206TV/B	20A Lighting Junction Box 6 Terminal	10/100
20A Standard for Lighting		
CEDJB20SW/B	20A Lighting Junction Box to BS6220	20/400

Connector Blocks - Single & Double Pole

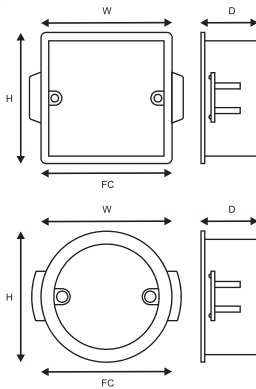
Code	Description	Min/Box
CB100SP	100A SP 5 x 35mm ²	1/10
CB100SPN	100A Single Pole & Neutral Connector Block	1/10



CLASSIC WHITE Dry Lining Boxes

Features & Benefits

- BS-5733 Matches CED - Wiring Accessories Range
- Large flange around front sides to prevent slipping into cavity
- Manufactured from flame retardant thermo-plastic material
- Two side cable entry plus 25mm base knockout
- Will fit board thickness 6.35mm - 15mm
- Back of the box can be used as template to mark box (cavity hole)
- Blue nylon lugs have one side lips to pull the lug easier with finger to grip the cavity wall



Dimensions:-	Type	HxWxD	Fixing Centre
	1G	86x86x35mm	60.3mm
	2G	146x86x35mm	120.6mm
	3G	176x88x35mm	120.6+60.3mm
	Dual	146x86x35mm	60.3mm
	Circular	Ø80x32mm	(Horizontal/Vertical) 50.8mm

Code	Description	Depth (mm)	Cut Hole Size (mm)	Box/Qty
32mm Single & Double				
CEDDLB1	Dry Lining Boxes 1 Gang	32	73x73	10/400
CEDDLB2	Dry Lining Boxes 2 Gang	32	133x73	10/200
32mm Dual				
CEDDLB2D	Dry Lining Boxes 2 Gang Dual	32	133x73	10/200
45mm Single & Double				
CEDDLB145	Dry Lining Box 1 Gang 45mm	45	73x73	10/200
CEDDLB245	Dry Lining Box 2 Gang 45mm	45	133x73	10/200
32mm Triple				
CEDDLB3	Dry Lining Box 2 Gang + 1 Gang		215x73	10/200
Circular Dry Lining Boxes				
CEDDLBCIR	Dry Lining Box Circular 32mm Deep	32	Ø61	10/400

UNIVERSAL RANGE

Metal Boxes to fit Classic White Range

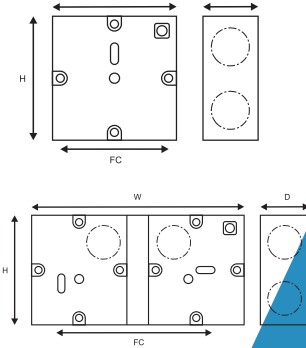
Metal Range

Manufactured from durable pre-galvanised steel to ensure longer life and for ease of installation, these boxes have Ale knockouts to ensure that they can be used in the widest possible wiring configuration.

Metal Switch & Socket Boxes

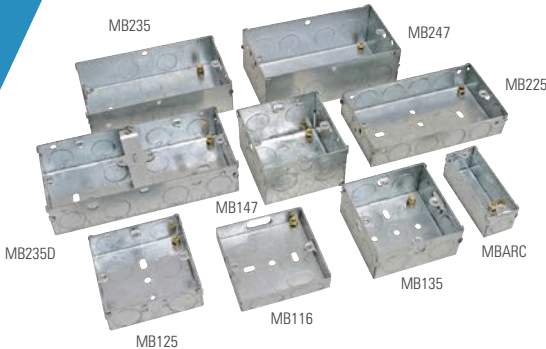
- BS-4662 (where applicable) All boxes are for use with flush fittings
- Includes brass earth terminals as standard

Type	Lugs	Knockouts	Fixing Centre
MB116	1 adjustable 1 fixed	Hole to 1 side K/O to others	60.3mm
MB125	2 adjustable 2 fixed	20mm ² 2 each side 2 each to width 4 to base	60.3mm
MB135	2 adjustable 2 fixed	20mm ² 2 each side 2 each to width 4 to base	60.3mm
MB147	2 adjustable 2 fixed	2 each to width 2 each to width 4 to base	60.3mm
MB225	1 adjustable 1 fixed	4 each to length 2 each to width 4 to base	120.6mm
MB235	1 adjustable 1 fixed	4 each to length 2 each to width 4 to base	120.6mm
MB247	2 fixed	4 each to length 2 each to width 4 to base	120.6mm
MB235D	8 fixed	4 each to length 2 each to width 4 to base	120.6mm
MBARC	2 fixed (non adjustable)	16mm ² 1 to width 1 to base	40mm



Code	Description	Dimensions (mm)	Box/Qty
16mm Single			
MB116	Metal Switch Box 16mm	70x70x16	20/200
25mm Single, Twin & Dual			
MB125	Metal Socket Box 25mm	68.3x68.3x25	10/100
MB225	Metal Socket Box 25mm Twin	129x68.3x25	5/50
35mm Single, Twin & Dual			
MB135	Metal Socket Box 35mm	68.3x68.3x35	10/100
MB235	Metal Socket Box 35mm Twin	129x68.3x35	5/50
MB235D	Metal Socket Box 35mm Dual - Non Adjustable Lug	154x68.3x35	5/50
47mm Single & Twin			
MB147	Metal Cooker Box 47mm - Non Adjustable Lug	68.3x68.3x47	5/50
MB247	Metal Cooker Box 47mm Twin - Non Adjustable Lug	129x68.3x47	5/50
Metal Box Architrave			
MBARC	Metal Box Architrave Switch Single - Non Adjustable Lug	72x25x27	20

Note: Dimensions Specification standards may vary due to availability of product.



Telescopic Mounting Bracket

- Completely adjustable - fits a range of stud spacings and
- 11/2" or 21/8" deep boxes.
- Pre-punched screw holes provide for easy box installation.
- Bar is marked with scale for stud spacing.
- Finish: Pre-galvanised
- 15" to 26" Stud spacing



Code	Description	Box/Qty
BMB26	15 - 26" Stud Spacing for Single & Twin or Triple Boxes	1/10
BMB16	11 - 18" Stud Spacing for Single & Twin or Triple Boxes	1/10



CEDCLS50N



CEDCLS45N



WCPS2SC

Ceiling Switches 10A

- BS 3676 AC only BS EN 60669-1
- 10A X rated - no need to de-rate for fluorescent or inductive load
- Cord length 1.5Mtrs minimum
- Terminal capacity 2 x 1.5mm²
- Two way can be wired as one way or two way
- 2 captive screws
- Kitemark approved licence no. KM73110

Dimensions:-	Type	WxD	Fixing Centre
	1W, 2W	81x37mm	50.8mm

Ceiling Roses

- BS67
- Clear polycarbonate moulded base
- Urea moulded cover in brilliant white finish (urea for easy cleaning)
- Capacity each terminal 3 x 1.5mm² Service load up to 2.5kgms
- Eight inline angled terminals with captive screws for ease of wiring
- 4 fixing holes, two at 50.8(2") centre for mounting on BS4568-pt2 conduit box
- Ale knockouts at base for ease of wiring
- Large size earth terminal
- Positive restraint strong cable cord & retaining hook

Dimensions:-	Type	WxD	Fixing Centre
	Ceiling Rose	86x26mm	50.8mm(with cover)
	Plug-In Ceiling Rose	86x26mm	50.8mm

Code	Description	Kitemark	Box/Qty
Ceiling Switches 10A			
CEDCPS1	Ceiling Switch 10A 1W (Pullcord)	✓	10/150
CEDCPS2	Ceiling Switch 10A 2W (Pullcord)	✓	10/150
Ceiling Roses			
CEDCR3TE	Ceiling Rose 5A 3 Terminal + Earth		10/300
CEDPCR	Plug In Ceiling Rose to BS5733		10/200
Ceiling Switches 45A, 50A - Double Pole with Neon			
CEDCLS45N	Ceiling Switch 45A + Neon Pull Cord		5/100
CEDCLS50N	Ceiling Switch 50A + Neon Pull Cord		5/100
Chrome Ceiling Switch			
WCPS2SC	Ceiling Switch 10A 2 Way Pull Cord Satin Chrome		1/10
WCPS2CHR	Ceiling Switch 10A 2 Way Pull Cord Chrome		1/10

CLASSIC WHITE

Ceiling Range

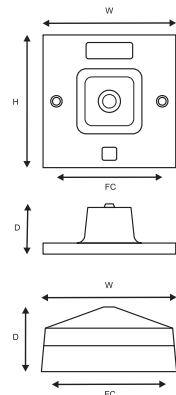
Ceiling Switches 45A, 50A Double Pole with Neon

- BS3676 - 1 BSEN60669-1
- Indicator complies with IEC-16th wiring regulations
- 3mm contact gap when in off position
- Terminal Capacity - 1 x 16mm²
- Maximum Depth - Metal/Plastic/PVC Box - 35mm
- Rear projection 20mm approx. 45A, 50A D.P. ceiling switches have neon indicator & mechanical pull on/off identification

Dimensions:-	Type	HxWxD	Fixing Centre
	1G	86x86x36mm	60.3mm

Chrome Ceiling Switch

- Diameter x Height: 75x30mm
- Designed for use in bathrooms
- Operates on mains and low voltage lighting
- Complete with White and Chrome covers
- Direct retrofit for conventional pullcord





Pendant Sets with Metal Inserts

- BS EN-60598-2-1
- Available in - 6" & 9" length
- Clear Polycarbonate Base
- Heat resistant cable 0.75mm² 2 core BASEC approved - BS 6141
- T2 - IA holder (LHT2S) and ceiling rose (CR3TE) with as shown specifications in this section n Energy Saving version for PL & PLC IAs (universal)

Lampholders (T2 - 100W) - (LHT2S)

- BS-EN-61184
- Supplied with cord grip & short skirt
- T2 120° rating Suitable for use up to 100W
- Easy access to screws and terminals making wiring faster, easier and safer
- Body made from robust thermoplastic compound fully insulated, eliminates need for metal liner
- Solid brass piston plunger (non rising steel spring)
- Terminal capacity - 1.5mm² maximum
- Switched version available



CEDPS6T2

CEDPS6T2/M

Batten Holder & Ceiling Rose (T2 - 100W)

- BS EN61184
- LA holder body is the same specification as standard LAholders (LHT2S)
- 50.8mm fixing centres to use with mounting blocks or conduit box
- Straight or angled two version
- Supplied with home office skirt for extra safety
- 2 Terminals & Earth. All ceiling roses have integral base CR3TE specification



PS6PLC

CEDBCR

Pendant Sets

Code	Description	Box/Qty
Pendant Sets Standard		
CEDPS6T2	Pendant Set 6" Drop T2 100W to BS60598-2-1	10/150
CEDPS9T2	Pendant Set 9" Drop T2 100W to BS60598-2-1	10/150
Pendant Set with Metal Ring		
CEDPS6T2/M	Pendant Set 6" Drop T2 Metal Ring	10/150
CEDPS9T2/M	Pendant Set 9" Drop T2 Metal Ring	10/150
Energy Saving Pendant Sets		
PS6PLC	6" Pendant Set 9-18W PL or PLC (Universal) G23/24	1/10
PS9PLC	9" Pendant Set 9-18W PL or PLC (Universal) G23/24	1/10

Battens & LAholders

Code	Description	Box/Qty
Ceiling Rose Batten LAholders		
CEDBCR	Batten Ceiling Rose 3 Terminal + Earth to EN 60598-2-1	10/200
CEDBCRA	Batten Ceiling Rose Angled 3 Terminal + Earth to EN 60598-2-1	10/200
Batten LAholders		
CEDBHAT2	Batten Holder Angle T2 to BSEN 61184	10/200
CEDBHST2	Batten Holder Straight T2 to BSEN 61184	10/200
Short Skirt LAholders		
CEDLHT2S	LA Holder T2 Short Skirt to BSEN 61184	20/600
CEDSLHT2S	Switched LA Holder T2 to BSEN 61184	20/200



CEDBCRA

CEDBHST2



CEDBHAT2

CEDLHT2S



FWSSK2USB

FLAT WHITE
Flat Slimline Moulded

Moulded Range

The slimline flat moulded range brings a new and cutting edge look to classic white wall switches and sockets.

Following the same exacting standards for manufacturing as the standard White moulded range. This range also feature consistent and aesthetic styling and inherent safety standards.

As with all our wiring accessories, there is an exclusive '25 year guarantee' on the complete range.

FWSSK2USB



FWSSK1



FWSSK2



FWSK1/2A



General Features

- 13 A Sockets - Shutter mechanism is operated by Earth Pin or Plug.
- 20 A Switches, Connection units offer built-in knockout facility at the base to enable units to be use with or without cord outlets.
- Positive Switch Action - Prevents balancing between "On" & "Off" position and gives reliable indication of the contact position.
- Sockets, Connection Units of DP range have Red colour markings on the switch for clear & easy identification of the on position.
- Urea compound used to offer longer life and easy to clean.
- Switch Rating - Switches have 10AX for inductive load.
- Easy Wiring - All terminal screw sockets face upwards
- Uses silver contacts for longer life.
- Larger Terminals - Provide positive clamping of conductors.
- Individually Packed - All products are individually packed in their own plastic bag, keeping the product clean for the end user.

Dimensions:-	Type	HxWxD	Fixing Centre
	1G	86x86x9mm	60.3mm
	2G	86x146x9mm	120.6mm

Socket Outlets

- BS 1363 AC only
- Contact Gap - 3mm
- Minimum Depth - Plastic/PVC box - 25mm
- Terminal Capacity - 4x2.5mm² (13A only)
- 2 Earth Terminals for easy installation - Single Pole Wider Switch & Double Pole Twin Switched Socket
- Supplied with M3.5 x 30mm fixing screws
- Front Plate Depth - Single Pole - 9mm & Double Pole - 13mm
- Kitemark approved - licence no. KM73109

Flat Range Moulded Sockets 13A - BS1363 pt2

Code	Description	Kitemark	Box/Qty
Switched Single & Twin - Single Pole			
FWSSK1	13A Single Switch Socket	✓	10/200
FWSSK2	13A Twin Switch Socket	✓	10/100
FWSSK1N	13A Single Switch Socket With Neon	✓	10/200
FWSSK2N	13A Twin Switch Socket With Neon	✓	10/100
Unswitched Single & Twin - Single Pole			
FWSK1	13A Single Socket Unswitched	✓	10/200
FWSK2	13A Twin Socket Unswitched	✓	10/100
Switched Single & Twin - Double Pole			
FWSSK1DP	13A Single Switched Socket - Double Pole	✓	10/200
FWSSK2DP	13A Twin Switched Socket - Double Pole	✓	10/100
2A - 5A 3 Pin Sockets - Unswitched			
FWSK1/2A	2A 3 Pin Socket	✓	10/100
FWSK1/5A	5A 3 Pin Socket	✓	10/100

Switched Sockets with USB Charger Ports 2.4A & 1.2A

Code	Description	Kitemark	Box/Qty
FWSSK2USB	2 Gang Switched Socket c/w USB Charging Ports 3.6VA		10/200



FWS11



FWSBELL



FWS22



FWFI3P



FWS42



FWSARC

Dimensions:-	Type	HxWxD	Fixing Centre
	1, 2 & 3G	86x86x9mm	60.3mm
	4 & 6G	86x146x9mm	120.6mm
	SARC	86x32x9mm	60.3mm (Vertical)

FLAT WHITE

Flat Slimline Moulded Sockets & Switches

Switches

- BS 3676 AC only BSEN60669
- 10A (X rated) suitable for inductive load
- FI3P AC - To BS-EN 60947-3-1992
- Supplied with M3.5 x 25mm fixing screws
- 2 way switches can be wired as 1 way or 2 way
- Bell push switch can be used for 240v AC or 24v d.c
- Minimum Depth - Metal/Plastic/PVC Box 16mm
- Terminal Capacity - 3x1.5mm²
- Three Pole Isolators provide isolation of fans for maintenance or repair without
- Isolation of complete circuit Kitemark approved, licence no. KM73110



Flat Range Moulded Switches 10A BS3676 (BSEN60669)

Code	Description	Kitemark	Box/Qty
Switches			
FWS11	1 Gang 1 Way Switch 10A	✓	10/300
FWS12	1 Gang 2 Way Switch 10A	✓	10/300
FWS22	2 Gang 2 Way Switch 10A	✓	10/300
FWS32	3 Gang 2 Way Switch 10A	✓	10/300
FWS42	4 Gang 2 Way Switch 10A	✓	5/100
FWS62	6 Gang 2 Way Switch 10A	✓	5/100
Intermediate & Fan Isolator Switches - 10A			
FWSINT	Intermediate Switch		10/300
FWFI3P	Fan Isolator Switch		10/300
Bell Switches			
FWSPRESS	Push Switch Press	✓	10/200
Architrave Switches - 10A			
FWSARC	1 Gang Architrave Switch 2 Way	✓	20/200



FWS20



FWS20N

Flat Range Moulded Switches 20A DP BS3676 (BSEN60669)

Code	Description	Box/Qty
FWS20	20A DP Switch	✓ 10/200
FWS20N	20A DP Switch + Neon	✓ 10/200

Flat Slimline Moulded Cooker Switches & Sockets / Connection Units / Flex Outlet Plates

Flex Outlet Plates

- Flex outlet at lower edge by knockout (choice of use)
- Supplied with M3.5 x 30mm fixing screws
- Cable cIA accommodates 2.5mm² flexible cable
- Fitted with 13A Fuse unless specified otherwise
- Minimum Depth - Metal/Plastic/PVC Box 25mm
- Terminal capacity - 3 x 2.5mm², 4 x 2.5mm² (Earth)
- Kite Mark approved licence no. KM73110

Dimensions:- Type 1G HxWxD 86x86x13mm Fixing Centre 60.3mm

Cooker Switches 45A + Sockets Horizontal to BS4177

- BS 4177 AC only
- 45A D.P. main switch with 13A socket
- Supplied with M3.5 x 30mm fixing screws
- Terminal capacity - 2 x 10mm², 1 x 10mm² each

Dimensions:- Type 2G HxWxD 86x146x13mm Fixing Centre 120.6mm

Cooker Switches & Flex Outlet Plates 45A Double Pole - to BS3676 BSEN 60669

- BS 3676 AC only
- Supplied with M3.5 x 30mm fixing screws
- Cable cIA accommodates 4mm² to 16mm² cable for 45A
- Terminal capacity - 3 x 2.5mm² for 20/25A

Dimensions:- Type 45A HxWxD 86x86x13mm Fixing Centre 60.3mm
 20/25A 86x86x23mm 60.3mm
 45A Tall 146x86x13mm 120.6mm (Vertical)



FWCS45N



FWCSD45N



FWSPS



FWSPSN



FWSP



FWCS45SKN

Flat Range Moulded - Cooker Sockets 45A

Code	Description	Kitemark	Box/Qty
FWCS45SK	45A DP Cooker + Socket	✓	5/50
FWCS45SKN	45A DP Cooker + Socket + Neon	✓	5/50

Flat Range Moulded - Switches 45A DP

Code	Description	Kitemark	Box/Qty
FWCS45	45A DP Switch Single Plate	✓	10/100
FWCS45N	45A DP Switch Single Plate + Neon	✓	10/100
FWCSD45	45A DP Switch Tall Twin Plate	✓	5/100
FWCSD45N	45A DP Switch Tall Twin Plate + Neon	✓	5/100

Flat Range Moulded - Connection Units 13A

Code	Description	Kitemark	Box/Qty
FWSP	13A Spur Unswitched	✓	10/200
FWSPS	13A Switched Spur DP	✓	10/200
FWSPN	13A Fused Connection Unit with Neon	✓	10/200
FWSPSN	13A Switched Spur + Neon DP	✓	10/200

Flat Range Moulded - Flex Outlet & Blank Plates

Code	Description	Kitemark	Box/Qty
FWFOP20	20A Fuse Outlet	✓	10/100
FWFOP25	25A Fuse Outlet	✓	10/100
FWFOP45	45A Flex Outlet	✓	10/100

Flat Slimline Moulded Dimmers



FWDP400/32W



FWDP250/22W



FWDP400/12W

Rotary & Push Dimmers - White

- BS-800 BS-55518
- 2 way dimmers are suitable for 1 & 2 way switching
- Suitable for Tungsten Filament only
- Minimum wattage dimming can be operated - 40W
- Supplied with M3.5 x 30mm fixing screws
- Minimum Depth - Metal/Plastic/PVC Box 25mm Display clam packing

Dimensions:-	Type	HxWxD	Fixing Centre
	1G	86x86x10mm	60.3mm

TV, FM Satellite Outlet Coaxial Socket Outlet - BS 3041

- Isolated unit - for use in multi-outlet commercial system providing safety isolation
- TV-FM outlet - for direct connection to single satellite TV or FM coaxial down leads
- Suitable for VHF/UHF TV & VHF radio in both outlets accept standard coaxial plugs to BS3041

- Supplied with M3.5 x 30mm fixing screws
- Minimum depth of Metal/Plastic/PVC Box 25mm

Dimensions:-	Type	HxWxD	Fixing Centre
	1G	86x86x9mm	60.3mm

Telephone & TV Sockets

Telephone Sockets - IDC Type

- All sockets have IDC type connectors
- Surface sockets supplied with mounting box & screws
- Surface mounting sockets are smaller than flush
- Supplied with M3.5 x 30mm fixing screws
- Minimum depth of Metal/Plastic/PVC Box 25mm (Flush Fitting only)
- Terminal capacity - 2 x 0.68mm² to BT specification

Dimensions:-	Type	Dimensions	Fixing Centre
	Surface	68x68x29mm	60.3mm (Box supplied)
	Flush	86x86x9mm	60.3mm

Rotary & Push Dimmers - White

Code	Description	Box/Qty
FWDP400/12W	400W Push 1 Gang 2 Way Dimmer	1/10
FWDP250/22W	250W Push 2 Gang 2 Way Dimmer	1/10
FWDP400/32W	400W Push 3 Gang 2 Way Dimmer	1/10
FWDP250/42W	250W Push 4 Gang 2 Way Dimmer	1/10



FWTVS2



FWSTVFM



FWTVS1



FWTELFS1



FWRJ45/1

Flat Range Moulded - TV Satellite & Telephone

Code	Description	Box/Qty
Satellite TV		
FWSF0	Satellite Flush 1 Gang	10/200
FWSTV	Satellite/TV Outlet	10/200
FWSTVFM	Satellite /TV/FM Outlet	10/200

Flat Range Moulded - TV Socket

Code	Description	Box/Qty
Standard TV		
FWTVS1	Coaxial Socket 1 Gang	10/300
FWTVS2	Coaxial Socket 2 Gang	10/300
TV Isolated		
FWTVS1/I	1 Gang TV Socket Isolated	10
Code	Description	Box/Qty
FWTELFS1	Telephone Flush Slave	10/300
FWTELFM1	Telephone Flush Master	10/300

Cate5E Outlets

Code	Description	Box/Qty
FWRJ45/1	1 Gang RJ45 Outlet Cat5E	1/10
FWRJ45/2	2 Gang RJ45 Outlet Cat5E	1/10

Blank Plates

FWBP1	Blank Plate 1 Gang	20/600
FWBP2	Blank Plate 2 Gang	20/400

For LED dimmers please see page. 49

METAL CLAD

Wall Accessories



General Features

- Tough durable finish which is resilient to premature ageing and discolouration
- Metal Clad Range has steel plate finish with two coatings of tough paint finish
- Phosphate coat provides corrosion resistance
- Electrostatically applied Grey powder finish cured at 200°C for toughness in an oven
- All double pole power switches have Red markings on the switches
- Paint finish removed under each eyelet for better earth continuity
- All metal boxes have earth terminal of adequate size
- Each product is supplied with matching mounting box.
- All products made with white inserts

Metal Clad Sockets

	Code	Description	Rating	Kitemark	Box/Qty
Unswitched (Single Pole)	WMSK1	Unswitched Socket Single 13A	13A	✓	10/100
	WMSK2	Unswitched Socket Twin 13A	13A	✓	5/50
Switched (Single Pole)	WMSSK1	Switched Socket Single 13A	13A	✓	10/100
	WMSSK2	Switched Socket Twin 13A	13A	✓	5/50
	WMSSK2USB	Metal Clad Switched Socket Twin USB	13A	✓	5/50
Switched (Double Pole)	WMSK1DP	Switched Socket Single 13A - DP c/w 2 Earth Terminals	13A	✓	10/100
	WMSK2DP	Switched Socket Twin 13A - DP c/w 2 Earth Terminals + Neon		✓	5/50
	WMSK1N	Switched Socket Single 13A c/w 2 Earth Terminals	13A	✓	10/100
	WMSK2N	Switched Socket Twin 13A c/w 2 Earth Terminals + Neon	13A	✓	5/50

Metal Clad Switches

Switch 20A (Double Pole)	WMS20	20A Switch DP	20A	✓	10/100
	WMS20N	20A Switch + Neon DP	20A	✓	10/100
Switch 10A (Single Pole)	WMS11	Switch 1 Gang 1 Way	10A	✓	10/100
	WMS12	Switch 1 Gang 2 Way	10A	✓	10/100
	WMS22	Switch 2 Gang 2 Way	10A	✓	10/100
	WMS32	Switch 3 Gang 2 Way	10A	✓	10/100
	WMS42	Switch 4 Gang 2 Way	10A	✓	5/50
	WMS62	Switch 6 Gang 2 Way	10A	✓	5/50
	WMSINT	Intermediate Switch	10A		10/100

Metal Clad Spurs

WMSP	Fused Spur 13A DP	13A	✓	10/100
WMSPS	Fused Spur Switched 13A DP	13A	✓	10/100
WMSPSN	Fused Spur 13A + Neon DP	13A	✓	10/100
WMSPSFO	Switched Spur 13A with Flex Outlet DP	13A	✓	10/100
WMSPSNFO	Switched Spur 13A + Neon DP with Flex Outlet		✓	10/100

Metal Clad 45A

Single Plate	WMCS45	Metal Clad 45A DP Switch to BS3676 BSEN 60669	45A	✓	10/100
	WMCS45N	Metal Clad 45A DP Switch + Neon to BS3676 BSEN 60669	45A	✓	10/100
Double Plate	WMCS45	Metal Clad 45A DP Switch Tall to BS3676 BSEN 60669	45A	✓	5/50
	WMCS45N	Metal Clad 45A DP Switch Tall + Neon to BS3676 BSEN 60669	45A	✓	5/50
45A Cooker Sockets	WMCS45SK	Metal Clad 45A + Socket to BS4177	45A	✓	5/50
	WMCS45SKN	Metal Clad 45A + Socket + Neon to BS4177	45A	✓	5/50
Blank Plates	WMBP1	Blank Plate 1 Gang with Box			10/100
	WMBP2	Blank Plate 2 Gang with Box			5/50

Licence no. KM73109 and KM73110

Probably the world's best known product certification mark

Recognised as a legitimate sign of quality & safety

Only issued after the most rigorous product certification & quality management system by BSI. Plus an annual BSI factory inspection to ensure quality



Dimensions:

Type	HxWxD	Fixing Centre
1G	79x79x42mm	60.3mm
2G	79x138x42mm	120.6mm
45A	86x86x42mm	60.3mm
45A Tall	86x86x42mm	120.6mm (Vertical)



WMSSK1



WMSK2



WMS12



WMS22



WMS42



WMSPSNFO



WMSPSN



WMSP



WMSPSFO



WMCS45N



WMCS45N



WMCS45SK

Fused Connection Units 13A

- BS1363 pt4 Fused at 13A - BS1362 fuse
- Supplied with M3.5x20mm long fixing screw
- Two knockouts on each side
- Terminal capacity 3x2.5mm² & 4 x 2.5mm² for earth terminal
- Cable c/a accepts 2.5mm² cable n Metal box with 2 fixed lugs
- Kitemark Approved licence no. KM73109

Cooker Switches 45A + Sockets

- BS 4177-1992 AC only
- 45A D.P. main switch with 13A socket
- Supplied with M3.5 x 30mm fixing screws
- Terminal capacity - 2 x 10mm², 1 x 10mm² each

Cooker Switches 45A Double Pole to BS3676 BSEN 60669

- BS 3676 AC only
- Supplied with M3.5 x 30mm fixing screws
- Cable c/a accommodates 4mm² to 16mm² cable for 45A
- Terminal capacity - 3 x 2.5mm² for 20/25A
- Kitemark Approved licence no. KM73110

13A Socket Outlets

- BS1363 pt2
- Supplied with M3.5 x 20mm long fixing screws
- 1G sockets supplied with 4 knockouts 2G sockets supplied with 8 knockouts
- Terminal Capacity - 4 x 2.5mm² & 4 x 2.5mm² earth terminal
- Metal box with two fixed lugs
- Kitemark Approved licence no. KM73109

Switches 10A AX Rating

- BS 3676 BSEN 60669
- AX-Rated - do not de-rate for Fluorescent or inductive load
- 1.2.3 Gang unit supplied with a two knockout on each side - two fixed lugs
- Knockout accepts 20mm - diameter conduit
- Supplied with M3.5 x 20mm long fixing screws
- Terminal Capacity - 3 x 1.5mm² & 3 x 1.5mm² earth terminal
- Kitemark Approved licence no. KM73110

Switches 20A Double Pole

- BS3676 BSEN60669 Knockout accepts 20mm conduit
- Terminal Capacity 3 x 2.5mm² earth terminals
- Supplied with M3.5 x 20mm long fixing screws
- Kitemark Approved licence no. KM73109

DECORATIVE Chrome / Satin Chrome

Licence no. KM73109 and KM73110

Probably the world's best known product certification mark

Recognised as a legitimate sign of quality & safety

Only issued after the most rigorous product certification & quality management system by BSI. Plus an annual BSI factory inspection to ensure quality



WCSK1B



WCSSK2B



WSSCK2



WCSK1

Flat Range

CED chrome plate wall accessories provide another attractive alternative to the white range. They continue to incorporate the quality materials and conform to the same high manufacturing standards of all our products.

They are available in polished and satin finishes both with square corners and they add an eye pleasing touch to all fashionable interiors.

13A Sockets

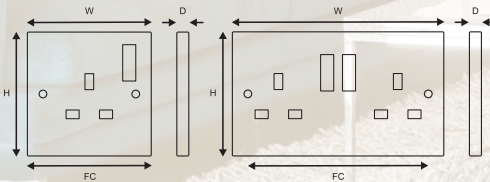
- BS1363
- Fits 25mm box
- Terminal capacity 4x2.5mm² (13A only) double pole with 2 earth terminals for convenient installation (front plate depth single pole and double pole 10mm)
- Kitemark Approved licence no. KM73109

Switches 10A AX Rating

- BS3676
- Minimum depth 16mm
- 10 AX Rating
- Terminal capacity 3x1.5mm²
- Kitemark Approved licence no. KM73110

Bell Push/Intermediate Fan/Isolator Switches

- BS3676 bell push/intermediate switch
- BSEN 609473 Fan Isolator



Dimensions:-

	Type	HxWxD	Fixing Centre
Sockets	1G	95x95x10mm	60.3mm
	2G	95x154x10mm	120.6mm
Switches	1+2+3G	95x95x10mm	60.3mm
	4+6G	95x154x10mm	120.6mm

Black / White Inserts



CHROME



SATIN CHROME

General Features

- Made from steel plated brass with chrome plating for a durable exterior
- Available with Black or White inserts
- All products supplied with 3.5x30mm chrome screws

Note:- All inserts manufactured to BSEN specification.

No more searching around for that elusive charger.

Now you can charge almost any device directly from the mains socket with just a USB cable

- 2.4A - 5V for iPads/Tablets
- 1.2A - 5V for Mobile Phones

*Total Output - 3.6A for faster charging of tablets (Compared to other usb sockets on the market with 2.1A total output)



WCSSK2BUSB

DECORATIVE
Chrome / Satin Chrome



WCS32



WCS32



WCS12B



WCS22B

Sockets 13A - BS1363 pt2

Description	Kitemark	Chrome White Ins	Chrome Black Ins	Satin Chrome White Ins	Satin Chrome Black Ins	Box/Qty
Switched Socket Single 13A	✓	WCSSK1	WCSSK1B	WCSSK1	WCSSK1B	1/10
Switched Socket Twin 13A	✓	WCSSK2	WCSSK2B	WCSSK2	WCSSK2B	1/5
Switched Socket Twin USB	✓	WCSSK2USB	WCSSK2USB	WCSSK2USB	WCSSK2USB	1/10
Unswitched Single Socket	✓	WCSK1	WCSK1B	WCSK1	WCSK1B	1/10
Unswitched Twin Socket	✓	WCSK2	WCSK2B	WCSK2	WCSK2B	1/5
Switched Socket Twin Double Pole	✓	WCSSK2DP	WCSSK2DPB	WCSSK2DP	WCSSK2DPB	1/5

Switches 10A - BS3676 BSEN 60669

Description	Kitemark	Chrome White Ins	Chrome Black Ins	Satin Chrome White Ins	Satin Chrome Black Ins	Box/Qty
Switch 10A 1 Gang 2 Way	✓	WCS12	WCS12B	WCS12	WCS12B	1/10
Switch 10A 2 Gang 2 Way	✓	WCS22	WCS22B	WCS22	WCS22B	1/10
Switch 10A 3 Gang 2 Way	✓	WCS32	WCS32B	WCS32	WCS32B	1/10
Switch 10A 4 Gang 2 Way	✓	WCS42	WCS42B	WCS42	WCS42B	1/5
Switch 10A 6 Gang 2 Way	✓	WCS62	WCS62B	WCS62	WCS62B	1/5

Bell Push/Intermediate Fan/Isolator Switches - BSEN 60669

Description	Kitemark	Chrome White Ins	Chrome Black Ins	Satin Chrome White Ins	Satin Chrome Black Ins	Box/Qty
Intermediate Switch 10A	✓	WCSINT	WCSINTB	WCSINT	WCSINTB	1/10
Fan Isolator Switch 10A 3 Pole	✓	WCFI3P	WCFI3PB	WCFI3P	WCFI3PB	1/10

DECORATIVE

Cooker Switches / Connection Units / Blank Plates



DP Switches 45A

- BS5733
- Terminal capacity 2x10mm²
- Kitemark Approved licence no. KM73109

Dimensions:-	Type	HxWxD	Fixing Centre
	1G	95x95x10mm	60.3mm
	2G	95x154x10mm	120.6mm

Cooker Switches 45A + Sockets

- BS3676
- Main switch 45A, Socket 13A
- Terminal Capacity 2x10mm² Red colour switches

Dimensions:-	Type	HxWxD	Fixing Centre
	2G	95x154x10mm	120.6mm

DP Switches 20A

- BS3676
- Terminal capacity 3x2.5mm², 4x2.5mm² (earth)
- Minimum depth 25mm
- Kitemark Approved licence no. KM73109

Dimensions:-	Type	HxWxD	Fixing Centre
	1G	95x95x10mm	60.3mm

13A Connection Units

- BS1363
- Terminals capacity 3x2.5mm², 4x2.5mm² (earth)
- Choice of standard or front flex outlet
- Can supply 3A, 5A fuse on special request
- Kitemark Approved licence no. KM73109

Dimensions:-	Type	HxWxD	Fixing Centre
	1G	95x95x10mm	60.3mm

Blank Plates

- Designed to cover 1 Gang & 2 Gang Flush Boxes
- Minimum Depth 16mm

Dimensions:-	Type	HxWxD	Fixing Centre
	1G	95x95x10mm	60.3mm
	2G	95x154x10mm	120.6mm



WSCCS45N



WCCSD45NB



WCCS45SKNB



WCSPSNB



WSCCS45SK



WCS20N

Switches 20A BS3676 BSEN 60669

Description	Kitemark	Chrome White Ins	Chrome Black Ins	Satin Chrome White Ins	Satin Chrome Black Ins	Box/Qty
Switch 20A Double Pole	✓	WCS20	WCS20B	WSCS20	WCS20B	1/10
Switch 20A Double Pole with Neon	✓	WCS20N	WCS20NB	WCS20N	WCS20NB	1/10

Switches 45A BS5733 BSEN 60669

Description	Kitemark	Chrome White Ins	Chrome Black Ins	Satin Chrome White Ins	Satin Chrome Black Ins	Box/Qty
Switch DP Switch 45A Single Size Plate	✓	WCCS45	WCCS45B	WSCCS45	WSCCS45B	1/10
Switch DP 45A Single Size Plate with Neon	✓	WCCS45N	WCCS45NB	WSCCS45N	WSCCS45NB	1/10
Switch DP 45A 2G Double Size Tall	✓	WCCSD45	WCCSD45B	WSCCSD45	WSCCSD45B	1/10
Switch DP 45A 2G Double Size Tall with Neon	✓	WCCSD45N	WCCSD45NB	WSCCSD45N	WSCCSD45NB	1/10

Cooker Switches with Socket 45A BS4177

Description	Kitemark	Chrome White Ins	Chrome Black Ins	Satin Chrome White Ins	Satin Chrome Black Ins	Box/Qty
Cooker Socket 45A Double Size Horizontal	✓	WCCS45SK	WCCS45SKB	WSCCS45SK	WSCCS45SKB	1/5
Cooker Socket 45A with Neon Double Size Horizontal	✓	WCCS45SKN	WCCS45SKNB	WSCCS45SKN	WSCCS45SKNB	1/5

Fused Connection Units BS1363 pt4

Description	Kitemark	Chrome White Ins	Chrome Black Ins	Satin Chrome White Ins	Satin Chrome Black Ins	Box/Qty
Fused Spur 13A DP	✓	WCSP	WCSPB	WSCSP	WCSPB	1/10
Fused Switched Spur 13A DP	✓	WCSPS	WCSPSB	WSCSPS	WCSPSB	1/10
Fused Switched Spur 13A with Neon DP	✓	WCSPSN	WCSPSNB	WSCSPSN	WCSPSNB	1/10
Fused Spur with Neon DP	✓	WCSPN	WCSPNB	WSCSPN	WCSPNB	1/10

Blank Plates

Description	Kitemark	Chrome White Ins	Chrome Black Ins	Satin Chrome White Ins	Satin Chrome Black Ins	Box/Qty
Single Blank Plate	✓	WCBP1		WSCBP1		1/10
Twin Blank Plate	✓	WCBP2		WSCBP2		1/5

Dimmers

- BS60669
- 2 way suitable for 1 way or 2 way
- Minimum wattage 40W (tungsten only)
- Minimum depth 25mm

Dimensions:- Type HxWxD Fixing Centre
1G 95x95x10mm 60.3mm

TV Outlets (Coaxial Socket Outlets)

- BS3041
- Isolated for use in multi outlet commercial system providing safety isolation
- TV-FM Outlet for direct connection to single TV and FM coaxial down leads
- Suitable for VHF/UHF TV and VHF radio
- Both outlets accept standard coaxial plugs to BS3041
- Supplied with long fixing screw M3.5x20mm

Dimensions:- Type HxWxD Fixing Centre
1G 95x95x10mm 60.3mm

Telephone Sockets IDC

- All sockets have IDC type connection
 - Socket supplied with long fixing screws M3.5 x 20mm
 - Terminal Capacity 2 x0.68mm² to BT specification
- Dimensions: Type HxWxD Fixing Centre
1G 95x95x10mm 60.3mm

Shaver Sockets

- BS61558-2 Input 240v ac output 240v to 110v
 - Terminal capacity 2x2.5mm² Maximum depth 47mm
- Dimensions:- Type HxWxD Fixing Centre
2G 154x95x10mm 120.6mm



WCDP250/12W



WCDP250/22W

Dimmers Diecast - BSEN 60669

Description	Chrome White Ins	Chrome Black Ins	Satin Chrome White Ins	Satin Chrome Black Ins
250W 1 Gang 1 Way Rotary	WCDR250/11W	-	WSCDR250/11W	-
250W 2 Gang 1 Way Rotary	WCDR250/21W	-	WSCDR250/21W	-
250W 2 Gang 2 Way Push On/Off	WCDP250/22W	-	WSCDP250/22W	-
250W 4 Gang 2 Way Push On/Off	WCDP250/42W	-	WSCDP250/42W	-
400W 1 Gang 1 Way Rotary	WCDR400/11W	-	WSCDR400/11W	-
400W 1 Gang 2 Way Push On/Off	WCDP400/12W	-	WSCDP400/12W	-
400W 3 Gang 2 Way Rotary	WCDP400/32W	-	WSCDP400/32W	-



WCTVS1



WCTELFM1B



WCTELFS1B



WSCSS1DV

TV / Telephone / Satellite Outlets - BS3041

Description	Chrome White Ins	Chrome Black Ins	Satin Chrome White Ins	Satin Chrome Black Ins
TV/FM Satellite				
TV Outlet Single	WCTVS1	WCTVS1B	WSCVS1	WSCVS1B
TV Outlet Twin	WCTVS2	WCTVS2B	WSCVS2	WSCVS2B
Flex Outlet Plate 20A	WCFOP20	WCFOP20B	WSCFOP20	WSCFOP20B
TV FM				
TV/FM Socket Outlet	WCTVFM	WCTVFM B	WSCVFM	WSCVFM B
Satellite/TV/FM Socket Outlet	WCSTVFM	WCSTVFM B	WSCSTVFM	WSCSTVFM B
Satellite Socket Outlet	WCSFO	WCSFO B	WSCSFO	WSCSFO B
Satellite Socket/TV Outlet	WCSTV	WCSTV B	WSCSTV	WSCSTV B
Telephone				
Telephone Socket Flush Master	WCTELFM1	WCTELFM1B	WSCTELM1	WSCTELM1B
Telephone Socket Flush Slave	WCTELFS1	WCTELFS1B	WSCTELS1	WSCTELS1B
Cat 5e				
Cat 5 1 Gang Socket Outlet	WCRJ45/1	WCRJ45/1B	WSCRJ45/1	WSCRJ45/1B

Shaver Socket Dual Voltage - BS EN61558-2

Description	Chrome White Ins	Chrome Black Ins	Satin Chrome White Ins	Satin Chrome Black Ins
Shaver Socket Dual Voltage 110/240v	WCSS1DV	WCSS1DV B	WSCSS1DV	WSCSS1DV B

DECORATIVE FLAT Sockets

Licence no. KM73109 and KM73110

Probably the world's best known product certification mark

Recognised as a legitimate sign of quality & safety

Only issued after the most rigorous product certification & quality management system by BSI. Plus an annual BSI factory inspection to ensure quality



Flat Range

Our decorative wiring accessories range, CED Flat Plate wall accessories are manufactured to the highest industry standards.

Available in polished or satin chrome or black nickel (all with rounded corners) these slim profile switches and sockets integrate subtly into many modern surroundings.



FSSK2DPC



FSK2SCB



FSSK2BN



FSSK1SC



FSSK1SCB



FSSK1BN



FSK1C

Black / White Inserts



CHROME



SATIN CHROME



BLACK NICKEL

General Features

- Metal Plate Rockers
- Made from high quality Stainless Steel, polished to give a reflective finish
- Colour coordinated Eyelets
- Flat headed 3.5x30mm screws to add to the slim-line appeal
- Packed in an attractive boxes with a Euro hook slot for display
- Flat Range - Popular & Fast Moving, Flat Range carries Kitemark certificate (to follow)
- Available with a Black insert for Black Nickel or White insert for Chrome & Satin Chrome range

No more searching around for that elusive charger.

Now you can charge almost any device directly from the mains socket with just a USB cable

- 2.4A - 5V for iPads/Tablets
- 1.2A - 5V for Mobile Phones

*Total Output - 3.6A for faster charging of tablets (Compared to other usb sockets on the market with 2.1A total output)



FSSK2CUSB

DECORATIVE FLAT Sockets

Features & Benefits

- Code Colour Front Plate & Inserts
- SC Satin Chrome - White Inserts
- SCB Satin Chrome - Black Inserts
- C Chrome - White Inserts
- CB Chrome - Black Inserts
- BN Black Nickel - Black Inserts



13A Sockets Single & Double Pole

- BS1363
- Minimum Depth 25mm (35mm recommended)
- Terminal capacity 4x2.5mm² (13A only)
- Double Pole with 2 Earth Terminals for convenient installation
- Front Plate depth Single Pole and Double Pole 10mm
- Kitemark approval - licence no. KM73109

Dimensions:-	Type	HxWxD	Fixing Centre
	1G	95x95x10mm	60.3mm
	2G	95x154x10mm	120.6mm

Note: while manufacturing inserts all BSEN specifications were followed.



FSK1SCB



FSK1BN

13A Sockets

Description	Kitemark	Satin Chrome White Ins	Satin Chrome Black Ins	Chrome White Ins	Chrome Black Ins	Black Nickel Black Ins	Box/Qty
Single Pole							
13A 1 Gang Switched Socket (Single Pole)	✓	FSSK1SC	FSSK1SCB	FSSK1C	FSSK1CB	FSSK1BN	1/10
13A 2 Gang Switched Socket (Single Pole)	✓	FSSK2SC	FSSK2SCB	FSSK2C	FSSK2CB	FSSK2BN	1/5
13A 2 Gang Switched Socket Twin USB		FSSK2SCUSB	FSSK2SCUSB	FSSK2CUSB	FSSK2CBUSB	FSSK2BNUSB	1/10
Double Pole							
13A 1 Gang Switched Socket (Double Pole)	✓	FSSK1DPSC	FSSK1DPSCB	FSSK1DPC	FSSK1DPCB	FSSK1DPBN	1/10
13A 2 Gang Switched Socket (Double Pole) Unswitched, 5A 3 Pins	✓	FSSK2DPSC	FSSK2DPSCB	FSSK2DPC	FSSK2DPCB	FSSK2DPBN	1/5
13A 1 Gang Socket Unswitched	✓	FSK1SC	FSK1SCB	FSK1C	FSK1CB	FSK1BN	1/10
13A 2 Gang Socket Unswitched	✓	FSK2SC	FSK2SCB	FSK2C	FSK2CB	FSK2BN	1/5
5A 1 Gang 3 Pin Socket		FSK1/5ASC	FSK1/5ASCB	FSK1/5AC	FSK1/5ACB	FSK1/5ABN	1/10

DECORATIVE FLAT

Decorative Flat Range Switches



Switches 10A AX Rating

- BS3676 n Minimum Depth 16mm n 10AX Rating
- Terminal Capacity 3x1.5mm² square
- Kitemark approval - licence no. KM73110

Dimensions:-	Type	HxWxD	Fixing Centre
	1 + 2 + 3G	95X95X10mm	60.3mm
	4 + 6G	95X154X10mm	120.6mm

Intermediate/ Fan Isolator Switches

- BS53676 Intermediate Switch
- 60947-3 Fan Isolator

Dimensions:-	Type	HxWxD	Fixing Centre
	1G	95x95x10mm	60.3mm



Switches 10A AX Rating - EN60669

Description	Kitemark	Satin Chrome White Ins	Satin Chrome Black Ins	Chrome White Ins	Chrome Black Ins	Black Nickel Black Ins	Box/Qty
Switches 1 Gang - 3 Gang Single Plate							
10A 1 Gang 1 Way Switch	✓	FS11SC	FS11SCB	FS11C	FS11CB	FS11BN	1/10
10A 1 Gang 2 Way Switch	✓	FS12SC	FS12SCB	FS12C	FS12CB	FS12BN	1/10
10A 2 Gang 2 Way Switch	✓	FS22SC	FS22SCB	FS22C	FS22CB	FS22BN	1/10
10A 3 Gang 2 Way Switch	✓	FS32SC	FS32SCB	FS32C	FS32CB	FS32BN	1/10
Switches - 4 Gang Double Plate							
10A 4 Gang 2 Way Switch	✓	FS42SC	FS42SCB	FS42C	FS42CB	FS42BN	1/15
10A 6 Gang 2 Way Switch	✓	FS62SC	FS62SCB	FS62C	FS62CB	FS62BN	1/15
Bell Push							
Bell Push Switch		FSBELLSC	FSBELLSCB	FSBELLC	FSBELLCB	FSBELLBN	1/10

Intermediate/ Fan Isolator Switches - EN 60669

Description	Satin Chrome White Ins	Satin Chrome Black Ins	Chrome White Ins	Chrome Black Ins	Black Nickel Black Ins	Box/Qty
10A Intermediate Switch	FSINTSC	FSINTSCB	FSINTC	FSINTCB	FSINTBN	1/10
10A Fan Isolator Switch 3 Pole	FFI3PSC	FFI3PSCB	FFI3PC	FFI3PCB	FFI3PBN	1/10



DECORATIVE FLAT

Decorative Flat Range Connection Units 20A DP Switches

13A Connection Units

- BS1363
- Terminals Capacity 3x2.5mm², 4x2.5mm² (Earth)
- Choice of Standard or Front Flex Outlet
- Can supply 3A, 5A Fuse on special request
- Kitemark approval - licence no. KM73109



Dimensions:- Type 1G HxWxD 95x95x60mm Fixing Centre 60.3mm

DP Switches 20A

- BS3676
- Terminal Capacity 3x2.5mm², 4x2.5mm² (Earth)
- Minimum Depth 25mm
- Kitemark approval - licence no. KM73110

Dimensions:- Type 1G HxWxD 95x95x10mm Fixing Centre 60.3mm

13A Connection Units - BS1363

Description	Kitemark	Satin Chrome White Ins	Satin Chrome Black Ins	Chrome White Ins	Chrome Black Ins	Black Nickel Black Ins	Box/Qty
Connection Units (Double Pole)							
13A Fused Connection Unit DP	✓	FSPSC	FSPSCB	FSPC	FSPCHRB	FSPBN	1/10
13A Fused Connection Unit with Switch DP	✓	FSPSSC	FSPSSCB	FSPSCHR	FSPSCHRB	FSPSBN	1/10
13A Fused Connection Unit with Switch Neon DP	✓	FSPSNC	FSPNSCB	FSPSNC	FSPSNCB	FSPSNBN	1/10

Connection Units with Flex Outlet Plate

Flex Outlet Switched + Neon	✓	FSPSNFOSC	FSPSNFOSCB	FSPSNFOC	FSPSNFOCB	FSPSNFOBN	1/10
13A Switched Spur Front Flex Outlet	✓	FSPSFOSC	FSPSFOSCB	FSPSFOC	FSPSFOCB	FSPSF0BN	1/10
13A Switched Fuse Spur Front Flex Outlet + Neon	✓	FSPSNFOSC	FSPSNFOSCB	FSPSNFOC	FSPSNFOCB	FSPSNFOBN	1/10

DP Switches 20A

Description	Kitemark	Satin Chrome White Ins	Satin Chrome Black Ins	Chrome White Ins	Chrome Black Ins	Black Nickel Black Ins	Box/Qty
20A Double Pole Switches	✓	FS20SC	FS20SCB	FS20C	FS20CB	FS20BN	1/10
20A Double Pole Switches + Neon	✓	FS20NSC	FS20NSCB	FS20NC	FS20NCB	FS20NBN	1/10
20A Flex Outlet Plate		FFOP20SC	FFOP20SCB	FFOP20C	FFOP20CB	FFOP20BN	1/10

DECORATIVE FLAT

45A DP Cooker Switches & Sockets



FCS45SKNBN



FCS45SC



FCS45NSCB

45A Cooker Switches & Sockets

Horizontal - BS3676

- BS3676 AC only
- 45A D.P. main switch with 13A socket
- Supplied with M3.5 x 30mm fixing screws
- Terminal capacity - 2 x 10mm², 1 x 10mm² each
- Kite Mark approved, licence no. KM73110 (available soon)

Dimensions:-	Type	HxWxD	Fixing Centre
	1G	95x95x13mm	60.3mm
	2G	86x146x13mm	120.6mm

45A DP Switches - Square Single Plate & Double Plate Tall

- BS5733
- Terminal Capacity 2 x 10mm²
- Kitemark approval - licence no. KM73110 (to follow)

Dimensions:-	Type	HxWxD	Fixing Centre
	1G	95x95x10mm	60.3mm
	2G Tall	154x95x10mm	120.6mm



FCS45NCB



FCS45NBN



FCS45C



FCS45SKBN



FCS45SKNBN



FCS45SKC



FCS45SKSCB

DP Switches - BS5733

Description	Kitemark	Satin Chrome White Ins	Satin Chrome Black Ins	Chrome White Ins	Chrome Black Ins	Black Nickel Black Ins	Box/Qty
45A Square Plate							
45A Double Pole Switch Square Single Plate	✓	FCS45SC	FCS45SCB	FCS45C	FCS45CB	FCS45BN	1/10
45A Double Pole Switch with Neon Square Single Plate	✓	FCS45NSC	FCS45NSCB	FCS45NC	FCS45NCB	FCS45NBN	1/10
45A Double Plate - Tall							
45A Double Pole Switch (2 Gang Plate) Tall	✓	FCS45SC	FCS45SCB	FCS45C	FCS45CB	FCS45BN	1/5
45A Double Pole Switch with Neon (2 Gang Plate)	✓	FCS45NSC	FCS45NSCB	FCS45NC	FCS45NCB	FCS45NBN	1/5
45A Cooker Switch Plus Socket							
45A Socket & Switch	✓	FCS45SKSC	FCS45SKSCB	FCS45SKC	FCS45SKCB	FCS45SKBN	1/5
45A Socket & Switch with Neon	✓	FCS45SKNSC	FCS45SKNSCB	FCS45SKNC	FCS45SKNCB	FCS45SKNBN	1/5



FTVS1SC



FTVS2CB



FTVS1CB



FTVS1BN



FTVS2BN



FTELFM1SC



FTELFM1BN



FTELFS1BN



FBP1SC



FBP1BN

DECORATIVE FLAT

TV / Telephone Sockets & Blank Plates



TV Outlet Coaxial Socket Outlet

- BS3041
- Suitable For VHF/UHF TV + VH Radio
- Minimum Depth 25mm, 35mm recommended

Dimensions:-	Type	HxWxD	Fixing Centre
	1G	95x95x10mm	60.3mm

Telephone Sockets

- BSEN 41003
- All Products IDC Screwless Connections
- Minimum Depth 25mm, 35mm recommended
- Terminal Capacity 2x0.68mm² to BT Specification

Dimensions:-	Type	HxWxD	Fixing Centre
	1G	95x95x10mm	60.3mm

Blank Plates

- Designed to cover 1Gang & 2Gang Flush Boxes
- Minimum Depth 16mm

Dimensions:-	Type	HxWxD	Fixing Centre
	1G	95x95x10mm	60.3mm
	2G	95x154x10mm	120.6mm

TV Outlet Coaxial Socket Outlet - BS3041

Description	Satin Chrome White Ins	Satin Chrome Black Ins	Chrome White Ins	Chrome Black Ins	Black Nickel Black Ins	Box/Qty
1 Gang TV Socket	FTVS1SC	FTVS1SCB	FTVS1C	FTVS1CB	FTVS1BN	1/10
2 Gang TV Socket	FTVS2SC	FTVS2SCB	FTVS2C	FTVS2CB	FTVS2BN	1/10

Telephone Sockets - BSEN 41003

Description	Satin Chrome White Ins	Satin Chrome Black Ins	Chrome White Ins	Chrome Black Ins	Black Nickel Black Ins	Box/Qty
1G BT Telephone Socket (Master) Flush	FTELFM1SC	FTELFM1SCB	FTELFM1C	FTELFM1CB	FTELFM1BN	1/10
1G BT Telephone Socket (Slave) Flush	FTELFS1SC	FTELFS1SCB	FTELFS1C	FTELFS1CB	FTELFS1BN	1/10

Blank Plates - BS5733

Description	Satin Chrome White Ins	Satin Chrome Black Ins	Chrome White Ins	Chrome Black Ins	Black Nickel Black Ins	Box/Qty
Blank Plate 1 Gang	FBP1SC		FBP1C		FBP1BN	1/10
Blank Plate 2 Gang	FBP2SC		FBP2C		FBP2BN	1/5

DECORATIVE FLAT

Dimmer / TV / Satellite & Shaver Sockets



FDP400/12SC



FDP250/22C



FDP400/12BN



FDP400/32BN



FSTVFMCB



FSTVBN



FSFOSC



FDP250/42BN



FSTVFMSC



FSTVMBN



FSS1DVSC



FSS1DVBN

Rotary & Push Dimmers - White

- BS 60669
- 2 way dimmers are suitable for 1 & 2 way switching
- Suitable for Tungsten Filament only. Minimum wattage dimming can be operated - 40W. Supplied with M3.5 x 30mm fixing screws
- Minimum Depth - Metal/Plastic/PVC Box 25mm
- Display clam packing

Dimensions:- Type 1G HxWxD 95x95x10mm Fixing Centre 60.3mm

TV Outlet - (Coaxial Socket Outlet)

- BS 3041
- Isolated unit - for use in multi-outlet commercial system providing safety isolation
- TV-FM outlet - for direct connection to single TV or FM coaxial down leads
- Suitable for VHF/UHF TV & VHF radio
- Both outlets accept standard coaxial plugs to BS3041
- Supplied with M3.5 x 30mm fixing screws
- Minimum depth of Metal/Plastic/PVC Box 25mm

Dimensions:- Type 1G HxWxD 95x95x10mm Fixing Centre 60.3mm

Shaver Sockets

- BS EN61558-2 / Input 240v ac output 240v to 110v
- Terminal capacity 2x2.5mm² Maximum depth 47mm

Dimensions:- Type 2G HxWxD 154x95x10mm Fixing Centre 120.6mm



Dimmers 1 - 4 Gang 2 Ways - BSEN 60669

Description	Satin Chrome	Satin Chrome	Chrome	Chrome	Black Nickel	Box/Qty
	White Ins	Black Ins	White Ins	Black Ins	Black Ins	
250W 1 Gang 2 Way	FDP250/12SC	-	FDP250/12C	-	FDP250/12BN	1/10
400W 1 Gang 2 Way	FDP400/12SC	-	FDP400/12C	-	FDP400/12BN	1/10
250W 2 Gang 2 Way	FDP250/22SC	-	FDP250/22C	-	FDP250/22BN	1/10
400W 3 Gang 2 Way	FDP400/32SC	-	FDP400/32C	-	FDP400/32BN	1/10
250W 4 Gang 2 Way	FDP250/42SC	-	FDP250/42C	-	FDP250/42BN	1/5

Satellite/TV/Telephone Sockets & Blank Plates - BS3041 & BS 41003

Satellite 1Gang Outlet	FSFOSC	FSFOSCB	FSFOC	FSFOCB	FSFOB	1/10
Satellite/TV Outlet	FSTVSC	FSTVSCB	FSTVC	FSTVCB	FSTVBN	1/10
Satellite/TV/FM Outlet	FSTVFMSC	FSTVFMSCB	FSTVFM	FSTVFMCB	FSTVFMBN	1/10

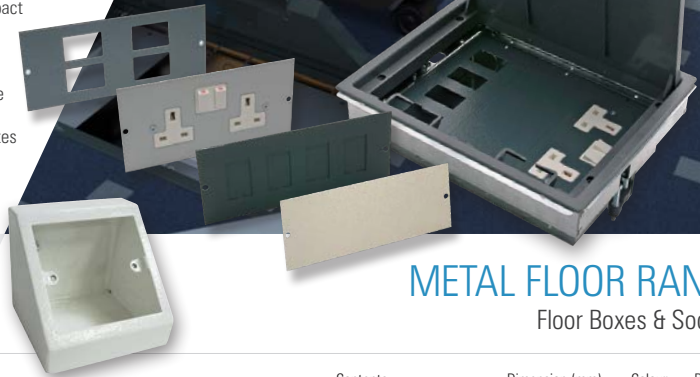
Shaver Sockets Dual Voltage

Shaver Socket 240v/110v	FSS1DVSC	FSS1DVSCB	FSS1DVC	FSS1DVCB	FSS1DVBN	1/5
-------------------------	----------	-----------	---------	----------	----------	-----

Floor Boxes & Accessories

- Floor Boxes manufactured from Galvanised Steel
- 20 & 25mm knockouts to accept flexible conduit
- Frame & Lid moulded from high impact Polycarbonate Grey Colour
- Galvanised Lid Insert for strength 221x305mm Floor Cut Out
- Easy Grip Recessed Lighting Handle
- Available in two versions 3 Plates
- CIA Fixing for fast installation 4 Plates
- Large range of accessories plates
- Dimension:- 305 x 242 x 76mm
- Cut Out Size:- 305 x 221mm

Accessories Plate Size:-
3 Plates - 185.5 x 88.8mm
4 Plates - 185.5 x 68.5mm



METAL FLOOR RANGE

Floor Boxes & Sockets

3 Compartment

Code	Description	Contents	Dimension (mm)	Colour	Box/Qty
FB3C	3 Compartment Floor Box Complete	1-SWD Socket Plate / 1-4 Module Data Plate / 1-Blank Plate	305x221x76	Dark Grey	1
FB3SKT	3 Compartment Floor Box Module with Twin SWD, Socket	Plate + Twin SWD Socket	185.5x88.8	Light Grey	1
FB3BP	3 Compartment Floor Box Spare Socket Blank Only	Blank for Twin SWD Socket	185.5x88.8	Light Grey	1
FB3PC	Blank Plate Cover	-	-	-	1
FB3BPLJ6C	3 Compartment Floor Box LJ6C Module Blank	Blank for LJ6	185.5x88.8	Light Grey	1
FB3BPRJ45	3 Module Data Blank RJ45	Blank for RJ45	185.5x88.8	-	1

4 Compartment

Code	Description	Contents	Dimension (mm)	Colour	Box/Qty
FB4C	4 Compartment Floor Box Complete	2-SWD Socket / 1-4 Data / 1-Blank	305x221x76	Dark Grey	1/50
FB4SKT	4 Compartment Floor Box Module with Twin Switched Socket	Plate + Twin Switched Socket	185.5x68.5	Light Grey	1
FB4BP	4 Compartment Floor Box Blank for Twin Switched Socket	Blank Plate (Twin Socket)	185.5x68.5	Light Grey	1
FB4BPRJ45	4 Module Blank RJ45 RJ45	Data Plate	185.5x68.5	Light Grey	1
FB4BPLJ6C	4 Compartment Floor Box LJ6 Module Blank Plate	Blank for LJ6	185.5x68.5	Light Grey	1

Module for Floor Boxes

Code	Description	Contents	Dimension (mm)	Colour	Box/Qty
FBMOD	Floor Box Module for LJ6	Data Module	185.5x88.8	Light Grey	1/50
FBMODBP	Floor Box Blank Insert for RJ4	-	185.5x88.8	-	1
FBMOD6	Floor Box for LJ6C	-	-	-	1
FBTELM	Floor Box Module Telephone Master	-	266 x 212	White	1
FBTELS	Floor Box Module Telephone Secondary	-	-	White	1

Pedestal Boxes

Code	Description	Contents	Dimension (mm)	Colour	Box/Qty
PB1	1 Gang Pedestal Triangular Box White	FBTELM	Ø140x105	Grey	1/10
PB2	2 Gang Pedestal Triangular Box White	FBTELS	Ø140x65	Grey	1/10

Metal Floor Sockets - BS1363 pt2

Code	Description	LxHxW (mm)	Colour	Box/Outer
CEDFS1CHR	13A Single Floor Socket Unswitched	86x96x24	Satin Chrome	1/100
CEDFS1BRS	13A Single Floor Socket Unswitched	86x96x24	Satin Brass	1/100
CEDFS2CHR	13A Twin Floor Socket Unswitched	146x96x24	Satin Chrome	1/50
CEDFS2BRS	13A Twin Floor Socket Unswitched	146x96x24	Satin Brass	1/50



WHITE ACCESSORIES

Rubber Wiring Accessories

General Features

- Made from quality tough heavy duty material with a resilience to high impacts
- Designed for use in rigorous Industrial Environments.
- Tough Service Shuttered Outlets Available in White or Black
- Flex Connectors Available in Black or Orange colour

Rubber Plug Tops

- BS1383/A Fused to 13A
- Kitemark Approval - licence no. KM58957

Dimensions:- Type HxWxD
Plug 52x50x22mm

Rubber Flex Connection

- BS6733 Available in 5A 2 PIN or 10A 3 PIN
- Suitable for Round Cable Available In - Black or Orange Colour

Dimensions:- Type HxWxD
2 PIN, 3 PIN 80x40x24mm
(Connected)

Rubber Trailing Sockets

- BS1363/A
- Terminal Capacity 6mm 250v AC only
- Wall mounting facility

Dimensions: Type HxWxD
1G 73x55x27mm
2G 76x101x27mm
4G 315x58x28mm

Rubber Trailing Sockets

Code	Description	Box/Qty
Single		
CEDTS1RW	Trailing Socket 1G Tough White	10/100
CEDTS1RB	Trailing Socket 1G Tough Black	10/100
Twin		
CEDTS2RW	Trailing Socket 2G Tough White	10/100
CEDTS2RB	Trailing Socket 2G Tough Black	10/100
4 Gang		
CEDTS4RW	Trailing Socket 4G Tough White	1/20
CEDTS4RB	Trailing Socket 4G Tough Black	1/20

Rubber Plug Tops

Code	Description	Box/Qty
WP1313RW	Plug Top 13A - 13 A Fused Tough White	10/200
WP1313RB	Plug Top 13A - 13 A Fused Tough Black	10/200

Rubber Flex Connection

Code	Description	Box/Qty
10A 3 Pins		
WFC103RW	10A 3 Pin Tough White Flex Connector	10/100
WFC103RB	10A 3 Pin Tough Black Flex Connector	10/100
5A 2 Pins		
WFC52RB	5A 2 Pin Tough Black Flex Connector	10/100

WP1313PB



WP1313RW



CEDTS2RB / CEDTS2RW



CEDTS1RB / CEDTS1RW



CEDTS4RW/ CEDTS4RB



WFC103RB & WFC52RB



WRCDSK1



WRCDSK1



WRCDSP



WRCDMSSK2



WRCDSK2



RCDAP1



RCDPT

RCD Sockets White & Metal Clad

Code	Description	Box/Qty
WRCDSK1	RCD Single Socket Unswitched	1
WRCDSK1	RCD Single Socket 30mA Switched	1
WRCDSK2	RCD Twin Unswitched Socket (Moulded)	1
WRCDSK2	Twin RCD Socket White 13A	1
WMRCDSP	Single RCD Fuse Spur (Metal Clad)	1
WMRCSSK1	Single RCD Switched Socket (Metal Clad)	1
WRCDMSSK2	Twin RCD Socket Metal Clad 13A	1
WRCDSP	RCD Spur 13A 30mA	1

RCD Adaptors Plug Top & In Line Connectors

Code	Description	Box/Qty
RCDAP1	RCD Adaptor Plug-In 13A	28
RCDPT	RCD Plug 13A 3 Pin - 30mA 3000W CIA Pack	48
RCDILC	RCD In Line Connector	

WIRING ACCESSORIES

RCD Sockets

RCD Sockets 30mA Tripping - White & MetalClad

- BS7288
- 13A 30mA sensitivity Response to DC pulsating, DC earth current fault
- Normally open electrical latching trips on power failure Suitable for domestic/commercial application Metal Clad with Grey epoxy resin powder coating Trips instantaneously
- Metal/PVC Box 35mm (Mini)

RCD Adaptors Plug Top & In Line Connector - Guard Master

- BS 7091, UKCA, CE
- 13A 240v - 50Hz DP RCD - Control 30mA sensitivity
- Trip Time - 40ms Protection - 13A Fuse
- Suitable for Hedge Cutters, Lawnmowers, Drills, Grinders, Water Pumps & Electric Fires

Dimensions:- Type HxWxD
RCDAP1 110x70x55mm



WMRCSSK1

WHITE ACCESSORIES

Plug Tops, Adaptors, Fuses & Flex Connectors



WAP2W



WAP3W



FWC



WSA1



WP5/WP15



WFC103

Adaptors to BS1363

- BS1363 Fused to BS1362 Shaver Adaptor Fused to BS6116
- 2 Way Adaptor Unfused 3 Way Adaptor Fused at 13A
- Shaver Adaptor Fused at 1A

Plug Tops - Nylon Top / White Plastic Base

- BS1363 BSI Kitemark Approved Fuse to BS 1362
- 13A 3 Pin sleeved Available with 3A, 5A & 13A
- Screw on cord grip cable eIA Round Pin - 2A, 5A & 15A

Plug Top Fuses (ASTA & BSI Approved) To BS1362

- BS1362 Approved - ASTA BSI Mixed Carded Fuse Wire
- Available In - 3A, 5A, 10A & 13A

Flex Connectors

- BS5733 Not suitable for outside use
- Male/Female connector Nylon flame retardant material
- Live part must be connected to female

Travel Plugs - Travel Adaptors/Plug

- Complies to - BS1363A
- Converts European SCHUKO to standard 13A 3 Pin
- Suitable for continental traveller to U.K.



WAP2W



WP1303



WP1313



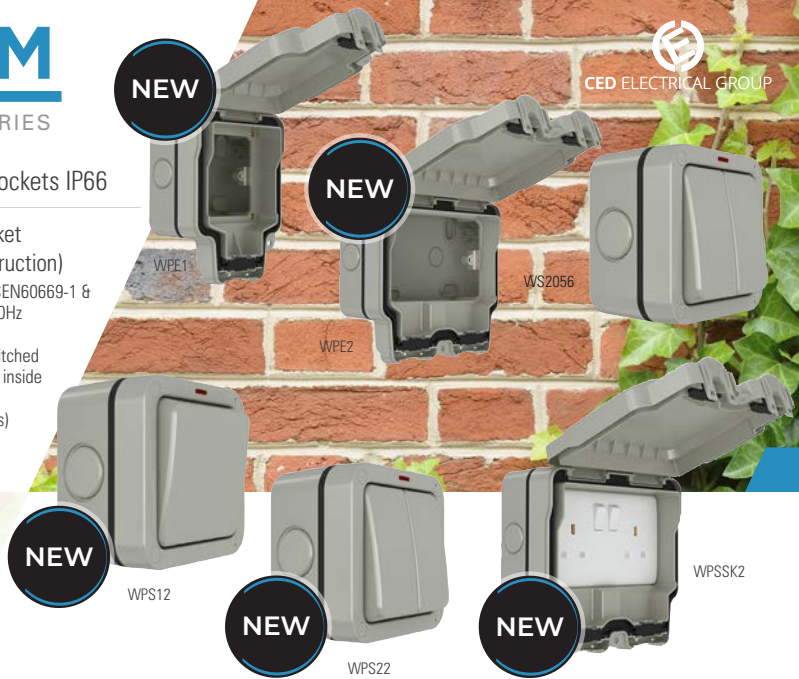
WTAP

Code	Description	Kitemark	Dimensions (mm)	Box/Qty
Adaptors				
WAP2W	Adaptor 13A 2 Way		50x50x70	20/200
WAP3W	Adaptor 13A 3 Way Fused		62.5x50x70	20/200
Shaver Socket				
WSA1	Adaptor Shaver 13A - 1A Fuse		50x50x45	20/200
13A Plug				
WP1303	Plug Top 13A - 3A Fused	✓	50x50x45	20/400
WP1305	Plug Top 13A - 5A Fused			
WP1313	Plug Top 13A - 13A Fused	✓	50x50x45	20/400
WP1313BLK	Plug Top 13A - 13A Fused	✓	50x50x45	20/400
WPSB	3 Pin Plastic Safety Blank Plug		42.5x35x25	24
2A, 5A & 15A Round Pin Plug				
WP2	Plug Top 2A Round 3 Pin Plug		32.5x32.5x35	1/10
WP5	Plug Top 5A Round 3 Pin Plug		45x45x40	20/300
WP15	Plug Top 15A Round 3 Pin Plug		55x55x50	10/100
Plug In Night Light				
WPNL	Plug In Night Light, Low Wattage Automatic		120x50x50	1/5
Plug Top Fuses				
PF3	Plug Top Fuses 3A (10 pack)		25x5	100
PF5	Plug Top Fuses 5A (10 pack)		25x5	100
PF10	Plug Top Fuses 10A (10 pack)		25x5	100
PF13	Plug Top Fuses 13A (10 pack)		25x5	100
Fuse Wire				
FWC	Fuse Wire Carded - 24 per Card 5A, 15A, 30A (8 Each)			1
Flex Connectors				
WFC103	Flex Connector 3 Pin 10A to BS5733		100x45x25	20/400
Plugs				
WTAP	Continental Travel Plug Adaptor 7.5A 250v to BS5733 (testing)		50x50x45	1/50
WTAV	Travel Adaptor Visitor to U.K. to BS5733		50x50x50	10

Weatherproof Switch Sockets IP66

Weatherproof Switch Socket Heavy Duty (Robust Construction)

- Fully approved - Switches to BSEN60669-1 & Sockets to BSEN1363 - 240v 50Hz
- Switches 10A & 20A DP
- Sockets 13A Switched & Unswitched
- Easy knockout - Just push from inside 4x20mm (switches and single sockets) 6x20mm (twin sockets)
- Easy opening lid
- Brass earth terminal plus space for extra earth terminal
- St steel self retaining screws fixing into brass insert
- Positive switch contact for sockets
- Adequate gasket for water protection
- Grey colour



IP66 Switches & Sockets (to fit any switch socket)

WPS12	20A 1 Gang 2 Way Switch with Neon	IP66	Grey	Grey	90x90x70	-
WPS22	20A 2 Gang 2 Way Switch with Neon	IP66	Grey	Grey	90x90x70	-
WPE1	1 Gang Empty Enclosure	IP66	Grey	Grey	116x158x90	-
WPE2	2 Gang Empty Enclosure	IP66	Grey	Grey	173x163x90	-
WPSK1	1 Gang 13 A 3 Pin Switched Socket + WPE1	IP66	Grey	Grey	116x158x90	-
WPSK2	2 Gang 13A 3 Pin Switched Socket + WPE2	IP66	Grey	Grey	173x163x90	-
WPSK2	13A 2G Weatherproof Unswitched Socket + WPE2	IP66	Grey	Grey	173x163x90	-
WPSPS	1 Gang Switched Connection Unit + WPE1	IP66	Grey	Grey	116x158x90	-

Weather Proof Outdoor Switches & Sockets - IP56

Code	Description	Rating	Switch Colour	Body Colour	Dimensions (mm)	Min/Box
WS2056	20A DP Weatherproof Switched	IP66	White	Light Grey	95x95x65	1/10
WPS204	IP66 Weather Proof Switches 20A 4 Pole	IP66	RAL7035	RAL7035	166x83x86	1/36
WPS354	IP66 Weather Proof Switches 35A 4 Pole	IP66	RAL7035	RAL7035	166x83x86	1/36
WPS634	IP66 Weather Proof Switches 63A 4 Pole	IP66	RAL7035	RAL7035	166x83x86	1/36



WPS204

Mini Switches

Benefits & Features

- Suitable for various applications
- 2A - 240v
- Positive spring action



WMPS2

WMILS2

WMS2

WPBS

Mini Switches 2A

Code	Description	Dimensions (mm)	Box/Qty
WMPS2	2A Mini Pull Cord Switch	22.5x15x25	20
WMILS2	2A Mini In Line Switch	65x27.5x25	20
WMS2	2A Mini Switch	22.5x15x25	20
WPBS	2A Push to Break Switch N.C. Flush Type Door Switch	47.5x15x35	10
WPBSS	Push To Break 2A Switch Surface Type (NC)		10

WHITE ACCESSORIES

Extension Leads

Extension Leads 1 Gang - 8 Gang

- Extension Leads to BS1363 pt2
- All Extension Leads 5A rating are supplied with 0.75mm 3 core BASEC approved cable & 13A rating supplied with 1.25mm² 3 core cable BASEC approved cable
- Packaging - Display Bag
- Standard, Fused, Switched, Individually Switched & Anti Surge Protected



Extension Leads 5A 1 Gang - Display Bag - BS1363 pt2

Code	Description	Dimensions (mm)	Box/Qty
CEDTS155	1 Gang Extension Lead 5A + 5Mtrs Cable	70x50x25	1/40

Extension Leads 13A 1 Gang - Display Bag - BS1363 pt2

Code	Description	Dimensions (mm)	Box/Qty
CEDTS1513	1 Gang Extension Lead 13A + 5Mtrs Cable	70x50x25	1/40
CEDTS1155	1 Gang Extension Lead 5A + 15Mtrs Cable	70x80x25	1/30
CEDTS11013	1 Gang Extension Lead 13A + 10Mtrs Cable	70x50x25	1/10
CEDTS11513	1 Gang Extension Lead 13A + 15Mtrs Cable	70x80x25	1/30

Extension Leads 13A 2 Gang - Display Bag - BS1363 pt2

Code	Description	Dimensions (mm)	Box/Qty
CEDTS2213M	2 Gang Extension Lead 13A + 2Mtrs Cable	100x63x25	1/40
CEDTS2313M	2 Gang Extension Lead 13A + 3Mtrs Cable	100x63x25	1/40
CEDTS2513M	2 Gang Extension Lead 13A + 5Mtrs Cable	100x63x25	1/20
CEDTS21013M	2 Gang Extension Lead 13A + 10Mtrs Cable	100x63x25	1/10

Extension Leads 13A 4 Gang - Display Bag - BS1363 pt2

Code	Description	Dimensions (mm)	Box/Qty
CEDTS4213M	4 Gang Extension Lead 13A with Neon + 2Mtrs Cable - Mini Size	250x50x25	1/40
CEDTS4313M	4 Gang Extension Lead 13A with Neon + 3Mtrs Cable - Mini Size	250x50x25	1/30
CEDTS4513M	4 Gang Extension Lead 13A with Neon + 5Mtrs Cable - Mini Size	250x50x25	1/30
CEDTS4213F	4 Gang Extension Lead 13A Fused with Neon + 2Mtrs Cable - Normal Size	280x60x25	1/30
CEDTS4213IS	4 Gang Individual Switched Extension Lead 13A with Neon + 2Mtrs Cable - Normal Size	350x60x25	1/30
CEDTS4113M	4 Gang Extension Lead 13A + 1Mtr Cable with Neon		
CEDTS41013M	4 Gang Trailing Socket 13A 10Mtrs	250x50x25	1/10
CEDTS42013M	4 Gang Trailing Socket 13A 20Mtrs Extension Lead	250x50x25	1/10
CEDTS4513F	4 Gang Trailing Socket 13A Fused 5Mtrs Extension Lead		1/10

Extension Leads 13A 6 Gang & 8 Gang - Display Bag - BS1363 pt2

Code	Description	Dimensions (mm)	Box/Qty
CEDTS6213M	6 Gang Extension Lead 13A + 2Mtrs Cable - Mini Size	350x50x25	1/20
CEDTS6313M	6 Gang Extension Lead 13A + 3Mtrs Cable - Mini Size	350x50x25	1/20
CEDTS6513M	6 Gang Trailing Socket 5Mtrs	350x50x25	1/20
CEDTS6213IS	6 Gang Individual Switched Extension Lead 13A + 2Mtrs Cable	440x60x25	1/20
CEDTS8213	8 Gang Extension Lead 13A + 2Mtrs Cable - Normal Size	480x60x25	1/10
CEDTS8313	8 Gang Trailing Socket 13A 3Mtrs	480x60x25	1/10
CEDTS8513	8 Gang Trailing Socket 13A 5Mtrs	480x60x25	1/10

Note. M = Mini Size, F = Fused, S = Switched & IS = Individually Switched.

Extension Leads 13A Anti-Surge

Code	Description	Dimensions (mm)	Box/Qty
CEDTS4213AS	4 Gang Ext. Lead 13A + 2Mtrs Cable Anti surge	250x50x25	1/20
CEDTS6213AS	6 Gang Ext Lead 13A + 2Mtrs Cable Anti Surge	250x50x25	1/10
CEDTS10213AS/TW	10 Gang free-standing extension lead with active neon surge protection	412x202x38	1/10

USB Pop-Up Tower Socket

- 3 x 13A Sockets
- 2 x USB charging ports iPods, mobile phones etc
- Sits flush with work surfaces when retracted and not in use
- Automatic Pop-Up operation
- LED Power On Indicator
- Supplied with 3 Pin (UK) Plug for easy installation



CEDTS10213AS/TW

PUST3P/USB

Trailing Sockets

- Trailing Sockets - BS1363 pt2
- Packaging - Display Bag
- 1, 2, 4, 6 & 8 Gangs
- 4 & 6 Gangs option with fused individual switch

13As 3 Pins (Blocks Only)

Code	Description	Dimensions (mm)
CEDTS1	1 Gang Trailing Socket 13A	67.5x50x25
CEDTS2	2 Gang Trailing Socket 13A	100x62.5x25

4 Gang - To BS1363 pt2 Standard Fused & Individually Switched

Code	Description	Dimensions (mm)
CEDTS4	4 Gang Trailing Socket+ Neon 13A	280x60x30
CEDTS4F	4 Gang Trailing Socket Fused 13A + Neon	280x60x30
CEDTS4S	4 Gang Trailing Socket Switched 13A	280x60x30

6 Gang - To BS1363 pt2 Standard Switched & Individually Switched

Code	Description	Dimensions (mm)
CEDTS6	6 Gang Trailing Socket 13A	400x60x25
CEDTS6IS	6 Gang Individual Switched Trailing Socket 13A	400x60x25
CEDTS6S	6 Gang Trailing Socket Switched 13A	400x60x25

8 Gang - To BS1363 pt2 - Standard Switched

Code	Description	Dimensions (mm)
CEDTS8	8 Gang Trailing Socket 13A + Neon	490x60x25

Extension Reels - Domestic

Code	Description	Dimensions (mm)
WCR106	Domestic Extension Reel 10Mtr 6A 2 Socket Plastic Case	265x200x55
WCR613	Domestic Extension Reel 6Mtr 13A 2 Socket Plastic Case	265x200x55

Extension Lead with Remote Control

- Overload and surge protection with reduced risk of fire and protects appliances
- Conforms to BS1363/A and BS5733/A
- Socket outlets will remain OFF after power cut, saving energy
- Power for transmitter: 12v DC (23A 1pc battery)
- Transmitter frequency: 433.92MHz with a remote control distance of 30mtrs (free area)
- Voltage: 230V~/50Hz, Max. 2400W / 120V~/60Hz, Max. 1200W

Code	Description	Dimensions (mm)	Box/Qty	
PUST3P/USB	3 x 13A Pop-Up Tower Socket	Ø90 x 367	1	NEW
PUST1P/USB	1 x 13A Pop-Up Socket	Ø90x263	1	NEW
PUST3PSS/USB	3 x 13A Pop-Up Tower Socket Stainless Steel Top	Ø90 x 367	1	NEW
RCTS5	5 Gang Extension Lead 13A with Remote Control	390 x 68 x 35	1	
CEDTS10213AS/TW	10 Gang free-standing extension lead with active neon surge protection	412 x 202 x 38mm	6	NEW

WHITE ACCESSORIES

Socket Blocks & Trailing Sockets



RCTS5



CEDTS1



CEDTS2



CEDTS4IS



CEDTS6



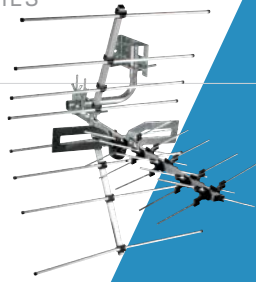
CEDTS8



WCR106

WHITE ACCESSORIES

T.V. Accessories



TVALDIGI

TV Aerials UHF Wide Band

- UHF channels in all areas
- Wide band to suit all Digital TV

TV Wall Bracket, Mast and V Bolts

- 6' x 1" Alloy Mast, Straight
- 6" Wall Bracket With V Bolt

TV Amplifiers

- Gain of 12-14dB per output
- Compact Range for domestic use only
- Choice of outlets 2,3 or 4
- Covers wide band, all VHF, FM, Channel 5 and Digital

TV Plugs, Connectors & Splitters

- Coaxial Plug (Male/Female are made out of metal aluminium body)
- In-Line Connectors made out of plastic covered metal
- All products are suitable for Coaxial Cable

TV Fly Leads

- Male TV Coaxial Leads (Moulded)
- Branded and Foil Screened Cable
- Available in 2, 4 and 10Mtrs



TVPM



TVC



TVFL2



TVS



TVSL15



SATFP/SATFC



TVA4

Code	Description	Dimensions (mm)	Packed/Colour	Box/Qty
TV Aerials UHF Wide Band				
TVALDIGI	32 Element TV Aerial Digital	Length 770		1
Code	Description	Dimensions (mm)	Colour	Box/Qty
TV Amplifiers				
TVAMP2	2 Way TV Amplifier c/w Filled Plate	134x80x41	White	1/20
TVAMP3	3 Way TV Amplifier c/w Filled Plate	177x85x46	White	1/20
TVAMP4	4 Way TV Amplifier c/w Filled Plate	177x85x46	White	1/20
TVAMP6	6 Way TV Amplifier c/w Filled Plate	273x89x48	White	1/20
TVAMP8	8 Way TV Amplifier c/w Filled Plate	273x89x48	White	1/20
Code	Description			Box/Qty
TV Plugs, Connectors & Splitters				
TVPM	TV Plug Male			100
TVPF	TV Plug Female			100
TVC	TV Connector (In Line)			100
TVS	TV Splitters			1/100
Code	Description	Type	Colour	Box/Qty
TV Fly Leads / TV Scart to Plug Lead / Satellite Plug and Connectors				
TVFL2	2Mtrs Coaxial TV Leads	Male to Male	White	1/10
TVFL4	4Mtrs Coaxial TV Leads	Male to Male	White	1/10
TVFL10	10Mtrs Coaxial TV Leads	Male to Male	White	1/10
TVSL15	TV Scart to 6 Pin Plug 1.5Mtrs Length		Black	1/40
SATFP	Satellite "F" Type Plug		Chrome	100
SATFC	Satellite "F" Type Coupler		Chrome	100



DPPP24



DPP05/GRY



DPPC1/RED



DPPC1/YEL



DPPC2/BLU



DPPC1/GRN

DATA PRODUCTS

Features & Benefits

- Range consists of all basic items like Patch Panels, Patch Leads, Adaptors & Module Plates
- Accessory to complete an installation including connection tools

Patch Leads

- Cat 5e, UTP with Boot Untwisted Shielded Pair (UTP) Cable
- Available In:- 5 Colours: Red, Grey, Yellow, Blue and Green
- Available In:- 6 Sizes: 0.5Mtrs, 1Mtrs, 2Mtrs, 3Mtrs, 5Mtrs & 10Mtrs
- Cat 6E available in Grey only

Patch Leads

- Cat 5e, UTP with Boot Untwisted Shielded Pair (UTP) Cable
- Available In:- 5 Colours: Red, Grey, Yellow, Blue and Green
- Available In:- 6 Sizes: 0.5Mtrs, 1Mtrs, 2Mtrs, 3Mtrs, 5Mtrs & 10Mtrs
- Cat 6E available in Grey only

Tools for Plugs

- Available In:- Plastic Punch Down simple tool to Complex Heavy Duty
- 8 Pin Crimping Tool for RJ45
- 8 Pin or 6 Pin Crimping Tool RJ45 for Patch Panel

Patch Panels

Code	Description	Dimensions	Blocks	Box/Qty
DPPP24	Cat5e 24 Ways Patch Panel	19"x17.5"x1.27"	8x3	1
DPPP48	Cat5e 48 Ways Patch Panel	19"x35"x1.27"	8x6	1

Patch Leads

Code	Description	Available Colour	Box/Qty
Cat5e			
DPPC1	1Mtr UTP Cat5e Patch Lead	Grey/Red/Yellow/Blue/Green	1
DPPC2	2Mtrs UTP Cat5e Patch Lead	Grey/Red/Yellow/Blue/Green	1
DPPC3	3Mtrs UTP Cat5e Patch Lead	Grey/Red/Yellow/Blue/Green	1
DPPC5	5Mtrs UTP Cat5e Patch Lead	Grey/Red/Yellow/Blue/Green	1
DPPC10	10Mtrs UTP Cat5e Patch Lead	Grey only	1
Cat6e			
DPPC05GRYCT6	0.5Mtrs UTP Cat6e Patch Lead	Grey only	1
DPPC1GRYCT6	1Mtrs UTP Cat6e Patch Lead	Grey only	1
DPPC2GRYCT6	2Mtrs UTP Cat6e Patch Lead	Grey only	1
DPPC5GRYCT6	5Mtrs UTP Cat6e Patch Lead	Grey only	1
DPPC10GRYCT6	10Mtrs UTP Cat6e Patch Lead	Grey only	1

NEW

DPCT8/6P



DPCT8P



DPPDT1



DPPDT8W

Tools for Plugs

Code	Description	Application	Box/Qty
DPCT8P	8 Pins Crimping Tool RJ45 + Stripper & Wire Cutter	Heavy Duty	
DPCT8/6P	8 Pins or 6 Pins Crimping Tool RJ45 + Stripper & Wire Cutter	Heavy Duty	
DPPDT1	Plastic Punch Down Tool Dual	DIY Single	
DPPDT8W	Heavy Duty Punch Down Tool	Heavy Duty	

*N.B. Standard leads are Grey colour. Please add Red=Red, Yel=Yellow, Blu=Blue, Grn=Green or GRY=Grey after the code

DATA ACCESSORIES

Wall Plates, PVC Pattress Boxes, Blank Plates & RJ45 Adaptors



DPWP1



DPWP2



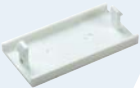
DPBP2



DPBP4



DPPVC132



DPBP5



DPBP12



DPASL



DPP8



DPMOD12



DPAISDN

Wall Plates & PVC Pattress Boxes

- Single Plate:- Suitable for One Module or Two Module
- Twin Plate:- Suitable for Three Module or Four Module
- Available In Two Style Flat & Bevelled
- Suitable for Surface Mounting
- PVC Pattress Available In Single & Twin Version
- Colour/Finish - White

Code	Description	Dimensions (mm)	Hole (mm)	Box/Qty
Wall Plates Flat				
DPWP1	Wall Plate Single for One Module	86x86	50x25	1/10
DPWP2	Wall Plate Single for Two Module	86x86	50x50	1/10
DPWP4	Wall Plate Twin for Three or Four Module	86x146	100x50	1/10
Wall Plates Bevelled				
DPBWP1	Wall Plate Single Bevelled 1/2 Module	86x86	50x25	1/10
DPBWP2	Wall Plate Single Bevelled 3/4 Module	86x86	50x50	1/10
PVC Pattress for Surface Mounting				
DPPVC132	1G 32mm PVC Surface Pattress Box	87x87x28	-	10/200
DPPVC232	2G 32mm PVC Surface Pattress Box	87x147x28	-	10/100

Blank Plates

- Used to cover Blank Space
- Available In:- 12.5mm, 25mm and 50mm (1/2, 1, 2 Module)

RJ45 Keystone Module Cat5e & RJ45 Plug

- Cat5e RJ45 Module
- Size 50x25mm
- Colour White
- Supplied with Identification Tag for numbering with Back Cover
- RJ45 8 Way Plug

ISDN/RJ45 to BT Adaptors

- Full Master Adaptors have surge arrestors (PSTN)
- PBAX Master Adaptors without surge asserters
- Secondary Adaptors have only resistors they are used for extension
- All Adaptors fitted with BT Plug on one side other side is filled with Telephone or
- Com Equipment
- RJ45 to BT Jack

Code	Description	Dimensions (mm)	Colour	Box/Qty
Modules				
DPBP5	1/2 Module Blank	12.5x50	White	1/10
DPBP12	1 Module Blank	25x50	White	1/10
DPBP22	2 Module Blank	50x50	White	1/10
Cat5e RJ45				
DPMOD6	RJ45 CAT6 Module 50 x 25mm			
DPMOD12	Cat5e RJ45 Module with Identification	25x50	White	1/50
DPP8	RJ45 8 Way Plug	22x12x10	White	10/100
Adaptors				
DPASL	Single Line Adaptors PBAX without Full Arrestor	75x27x24	White	1
DPAML	Multi-line Adaptor (PSTN) with Full Master Surge Arrestor	75x27x24	White	1
DPAISDN	ISDN Adaptor Secondary with Resistor for Extension	75x27x24	White	1
DPFIL	ADSL Broadband Filter Plug In Micro Filter & Adaptor Phone/Modem		White	1
DPICRJ45	In line Connector for RJ45			1



DPMODTVFM

WHITE ACCESSORIES

Data Products & Batteries



DPMODTVF



DPMODTELS

Modules

Code	Description	Box/Qty
DPMODTELM	Euro Module 25 x 50mm Telephone Master	1/10
DPMODTELS	Euro Module 25 x 50mm Telephone Slave	1/10
DPMODTVF	Euro Module 25 x 50mm TV Female	1/10
DPMODTVM	Euro Module 25 x 50mm TV Male	1/10
DPMODTVFM	Euro Module 25 x 50mm TV and FM	1/10
DPMODSAT	Euro Module 25 x 50mm Satellite	1/10
DPMODVSATFM	Euro Module 25 x 50mm Satellite and FM	1/10

Yuasa Brand Individually Boxed Lead Acid Batteries

- Yuasa Yucel - Sealed Lead Acid / Valve Regulated Battery
- Battery Type: Standby battery
- Terminals : 4.8mm / 0.187" Wide Male Spade Connection
- 3 - 5 Year design life when used in standby applications.
- Commonly used in Alarm Systems, Emergency Lighting, Ride on Toys, Torches, UPS systems and other electrical systems

Burglar Alarm Batteries - "Yuasa Brand" individually boxed Lead Acid Batteries



Code	Description	Dimensions (mm)	Box/Qty
LAB1.2A	1.2A Lead Acid NP1.2 12v	97 x 43 x 54.5	1
LAB2.2A	2.1A Lead Acid NP2.1 12v	178 x 34 x 64	1
LAB2.3A	2.3Ah Lead Acid Battery 12v	178 x 34 x 64	1
LAB3.2A	3.2A Lead Acid NP3.2 12v	134 x 67 x 64	1
LAB612A	1.2Ah Lead Acid Battery 6v	51 x 42.5 x 54.5	1
LAB632A	3.2Ah Lead Acid Battery 6v	134 x 34 x 64	1
LAB65A	5Ah Lead Acid Battery 6v	70 x 47 x 105.5	1
LAB7A	7A Lead Acid NP7 12v	151 x 65 x 98	1
LAB12A	12.0Ah Lead Acid Battery 12v	151 x 98 x 97.5	1

BELLS & CHIMES

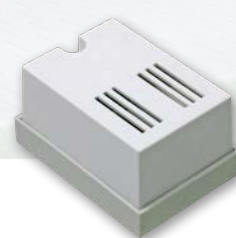
Door Bell Entry Systems / Transformers & Accessories

Features & Benefits

A range of Door Pushes, Push Buttons, Chimes and Transformers from one of the pioneers in door entry systems, providing complete kits that are easy to install and stylish. All products are finished to the highest specifications.

Door Bell Battery/Main Full Size 4C
(170 x 105 x 49mm) & Remote Control

- 4C-Size Batteries to use or 8v - 1A transformer our code (DBTF1) Mini 9v battery
- Sound 80dB at 1Mtr - 500mA (Mini @ 75dB) no approval required
- Black Base and White cover
- Supplied without batteries
- CIA Pack with Euro Slot



DBHULL1

DBBUZZ

Door Bells

Code	Description	Dimensions (mm)	Box/Qty
DBYRK1	Door Bell York Battery/Mains 4C 8v or 1A Transformer 80dB @ 1Mtr	170x105x49	1/12
DBYRK1SL	Door bell York silver 8v 1A battery/mains	170x105x49	1
DBBTH1	Door Bell Bath Battery/Mains 4C 8v or 1A Transformer 80dB @ 1Mtr	170x105x49	1/12
DBHULL1	Door bell Hull battery/mains 4c 8v 1A 80dB@1Mtr	170x105x49	
DBMINI	Mini 9v Battery 75dB @ 1Mtr (116 x 116 x 48mm)	116x116x48	
DBRC50M	Remote Control Battery Operated 50Mtr - Ding Dong	140x90x35	1/10



DBTF1

Transformers & Buzzers

Code	Description	Dimensions (mm)	Box/Qty
DBTF1	8v 1A AC Output Surface Mounting 240v 50Hz Door Bell Transformer	91x53x38	1/20
DBBUZZ	240v Buzzer	57x40x29	1/24

Push Buttons

Code	Description	Dimensions (mm)	Box/Qty
DBPB4WHI	Push Button Rectangular White		1/100
DBPB4BLK	Push Button rectangular black		1/100



DBPB4BLK

DBPB4WHI

IMT24H, IIMT24H-8A Surface mounting

- Approval - BS EN60730, GS, UKCA, CE
- 15 minutes On/Off switching interval - 24Hrs
- Electro-mechanical timer with override switch
- 16A 240v - 50Hz (inductive load 8A)
- Suitable for immersion heating and general purpose control
- Captive tappets

IMT7E, FT7E

(as above plus)

- 24Hr / 7 Day - application
- Programmable - shortest switching time 1 minute
- 42 setting over a period of 1 week - 6 function each day
- Battery reserve 100Hrs
- Manual override switch
- Terminal Capacity - 2.5mm²
- LCD display 4mm high

SURFACE



SURFACE



FLUSH / SURFACE



FLUSH / SURFACE



Code: IMT24H

- 16A (2A) Surface Immersion Heater Timer Mechanical 24 Hrs
- 15 minutes On/Off switching interval - 24Hrs
 - 16A 240v/50Hz
 - Electro-Mechanical type

16A

240v/50Hz

G.W.:n/a

Code: IMT7E

- 16A (2A) Surface Immersion Heater Timer Electronic 7 Day
- 15 minutes On/Off switching interval - 24Hrs
 - 16A 240v/50Hz
 - Electronic (hard wired) 7 Day / 6 On/Off Every Day.

16A

240v/50Hz

G.W.:n/a

Code: IMT24H-8A

- 8A Lighting Control Timer 24hrs
- 15 minutes On/Off switching interval - 24Hrs
 - 8A 240v/50Hz (suitable for inductive load 8A)
 - Mechanical (hard wired) fits 35mm plastic or metal box

8A

240v/50Hz

G.W.:n/a

Code: FT7E-8A

- 8A Lighting Control Timer 7 Days /24 Hours
- 15 minutes On/Off switching interval - 24Hrs
 - 16A 240v/50Hz (suitable for inductive load 8A)
 - Electronic type, fits 35mm plastic or metal box

8A

240v/50Hz

G.W.:n/a

Suitable for 'domestic and commercial applications'

TIMERS

Immersion Heater & Lighting Control Timers

TIMERS & TESTERS

Commercial Plug-In Timers

Commercial Plug-In Timers & Security Switches

This range of timers include domestic Plug-In Timers, General Purpose Timers, Immersion Timers & Security Switches, they are modern in design and are competitively priced. Products are available in both mechanical and electronic versions.



Code: FT24H

General Purpose Mechanical Timer 24 Hrs 16A with 15min. Segment Flush/Surface Mounting

- Approval - BS EN60730, GS, UKCA, CE 15 minutes On/Off switching interval - 24Hrs
- Electro-mechanical timer with override switch, suitable for immersion heating and general purpose control
- 16A 240v - 50Hz (inductive load 2A)
- Captive tappets Available In - IMT7E Surface mounting
- FT24H, FT7E Flush or surface mounting - fits into 35mm deep plastic or metal box



Code: FT7E

General Purpose Electronic Timer On/Off Position 7 Days/24 Hrs - 16A Flush/Surface Mounting

- Electronic version - IMT7E, FT7E (as above function)
- 24Hr / 7 Day programmable with shortest switching time 1 minute
- 42 setting over a period of 1 week - 6 function each day
- Manual override switch and battery reserve of 100 hours
- Terminal Capacity - 2.5mm² LCD display 4mm high



Code: PST24H

24Hr Plug-in Segment Timer Electro Mechanical 13A 3kW 15min. to BS3456

- 240v 50Hz Approval - BS EN60730, TUV-GS, UKCA, CE
- 15 minutes - Off/On Interval 24 hour switching version
- 96 settings - over a period of 24 hours
- 13A (3A inductive) / Easy to programme
- Electro-mechanical time control
- Clam packing for easy display



Code: PST7D

7 Day Plug-in Segment Timer Electro Mechanical 13A 3kW 24Hrs to BS3456

- 240v 50Hz Approval - BS EN60730, TUV-GS, UKCA, CE
- 15 minutes - Off/On Interval 24 hour switching version
- 96 settings - over a period of 24 hours / 13A (3A inductive) Easy to programme
- Electro-mechanical time control with manual override switch (self cancelling On/Off)
- Plug-In Timers KEMA/BS/CE Clam Pack



Code: PTEL

Electronic Plug-In Timer 6 On/Off 13A 3kW to BS3456

- Approval - BS EN60730, TUV-GS, UKCA, CE
- 24Hrs / 7 Days electronic plug-in timer / 13A 240v AC - 50Hz with battery reserve
- Shortest switching time 1 min. Random facility for extra security
- On/Off function each day / 24Hr digital clock display
- Battery backup to protect programmes in case of electricity failure



Code: SQT24H

24 Hr Plug in Square segment timer

- 240v 50Hz Approval - BS EN60730, TUV-GS, UKCA, CE
- 15 minutes - Off/On Interval 24 hour switching version
- 96 settings - over a period of 24 hours
- 13A (3A inductive) / Easy to programme
- Electro-mechanical time control
- Clam packing for easy display

Features & Benefits

- SDB - Smoke Detector Battery Operated (Kitemark) Photoelectric
- SDM - Mains Inter-connectable Photoelectric Smoke Detector
- SDH - Mains Inter-connectable Heat Detector Alarm
- SDCMONO - Mains Inter-connectable Carbon Monoxide Detector

Suitable for
'Commercial & domestic use'



DETECTORS

Smoke Detectors



Technical Specifications

	SDB	SDM	SDH	SDCMONO
General Information				
Product Colour	Bright White	Bright White	Bright White	Bright White
Dimensions (mm)	Ø107x35 mm	Ø120 x 54mm	Ø115 x 64mm	130 x 75 x 62mm
Electrical				
Power Source	9V Carbon Zinc/Alkaline/ Lithium Battery	220-240V AC	220-240V AC	220-240V AC
Operational Current	30mA max	<20mA (mains) 30 uA (9V battery)	20mA	20mA
Frequency Hz	50/60Hz	50/60Hz	50/60Hz	50/60Hz
Operating Temperature	0°C - 50°C	40°F - 100°F (4°C - 38°C)	60°C Fixed temperature	n/a
Alarm Sound Level	>85dB at 10 feet (3m)	85dB	85dB	85dB
Ambient Humidity	10%-90%RH, no condensation or icing	10% - 90%	Maximum 40°C	n/a
Battery Back Up	Y	9V DC Carbon Zinc Battery	9V DC Carbon Zinc Battery	9V DC Alkaline Battery
Performance Data				
Specifications	BS EN 14604: 2005	EN14604 2015	BS 5446-2:2003	EN50291-1:2010 + A1:2012
Approvals	UKCA, CE, ROHS	BSI, CPR, WEEE, ROHS, REACH, UKCA, CE	WEEE, ROHS, REACH, UKCA, CE	BSI, UKCA, CE, WEEE, RoHS REACH, UKCA, CE
Construction				
Body Material	Plastic	Non-flammable ABS plastic	Non-flammable ABS plastic	Non-flammable ABS plastic
Weight	198g	128g	198g	216g
Warranty Years	3yrs	5yrs	5yrs	5yrs

FDP400-12SC



LEDFDP150/22BN



LEDFDP150/42C



LEDWCDP150/12C



LEDWCDP150/22SC



LEDWCDP150/42C

LED DIMMERS

Flat & Stepped Edge Dimmers (1 Gang - 4 Gang)

Features & Benefits

- Auto detects Leading/Trailing edge
- Push on/off
- Soft start operation
- User defined minimum dimming level
- Built in short circuit protection



Dimensions:-	Type	HxWxD	Fixing Centre
	1G/2G	86x86x10mm	60.3mm
	3G/4G	86x146x10mm	120.6mm

LED Flat Decorative Dimmer with Automatic Control Detection

Code	Description	Finish	Min/Box
LEDFDP150/12BN	1 Gang 2 Way Flat Decorative	Black Nickel	1
LEDFDP150/12C	1 Gang 2 Way Flat Decorative	Chrome	1
LEDFDP150/12SC	1 Gang 2 Way Flat Decorative	Satin Chrome	1
LEDFDP150/22BN	2 Gang 2 Way Flat Decorative	Black Nickel	1
LEDFDP150/22C	2 Gang 2 Way Flat Decorative	Chrome	1
LEDFDP150/22SC	2 Gang 2 Way Flat Decorative	Satin Chrome	1
LEDFDP150/32BN	3 Gang 2 Way Flat Decorative	Black Nickel	1
LEDFDP150/32C	3 Gang 2 Way Flat Decorative	Chrome	1
LEDFDP150/32SC	3 Gang 2 Way Flat Decorative	Satin Chrome	1
LEDFDP150/42BN	4 Gang 2 Way Flat Decorative	Black Nickel	1
LEDFDP150/42C	4 Gang 2 Way Flat Decorative	Chrome	1
LEDFDP150/42SC	4 Gang 2 Way Flat Decorative	Satin Chrome	1

LED Stepped Edge Decorative Dimmer with Automatic Control Detection

Code	Description	Finish	Min/Box
LEDWCDP150/12W	1 Gang 2 Way Stepped Edge Decorative	Chrome	1
LEDWCDP150/22W	1 Gang 2 Way Stepped Edge Decorative	Chrome	1
LEDWCDP150/32W	3 Gang 2 Way Stepped Edge Decorative	Chrome	1
LEDWCDP150/42W	4 Gang 2 Way Stepped Edge Decorative	Chrome	1
LEDWCDP150/12W	1 Gang 2 Way Stepped Edge Decorative	Satin Chrome	1
LEDWCDP150/22W	1 Gang 2 Way Stepped Edge Decorative	Satin Chrome	1
LEDWCDP150/32W	3 Gang 2 Way Stepped Edge Decorative	Satin Chrome	1
LEDWCDP150/42W	4 Gang 2 Way Stepped Edge Decorative	Satin Chrome	1

LED DIMMERS

LED Dimmers - White & Flat Range (1 Gang - 4 Gang)

Features & Benefits

- Auto detects Leading/Trailing edge
- Push on/off
- Soft start operation
- User defined minimum dimming level
- Built in short circuit protection
- Loading:- Trailing Edge 10W - 40W GLS (incandescent)
5W - 15W - LED
BS EN60669-2-1

LEDDP150/22W

LEDDP150/32W

LEDDP150/12W

Dimensions:-	Type	HxWxD	Fixing Centre
	1G/2G	86x86x10mm	60.3mm
	3G/4G	86x146x10mm	120.6mm



LED Push Dimmer with Automatic Control Detection (Classic White)

Code	Description	Min/Box
LEDDP150/12W	1 Gang 2 Way Push Dimmer with Automatic Control Detection	1
LEDDP150/22W	2 Gang 2 Way Push Dimmer with Automatic Control Detection	1
LEDDP150/32W	3 Gang 2 Way Push Dimmer with Automatic Control Detection	1
LEDDP150/42W	4 Gang 2 Way Push Dimmer with Automatic Control Detection	1

LED Slimline Push Dimmer with Automatic Control Detection (Flat Range)

Code	Description	Min/Box
LEDFWDP150/12W	1 Gang 2 Way Slimline Push Dimmer with Automatic Control Detection	1
LEDFWDP150/22W	2 Gang 2 Way Slimline Push Dimmer with Automatic Control Detection	1
LEDFWDP150/32W	3 Gang 2 Way Slimline Push Dimmer with Automatic Control Detection	1
LEDFWDP150/42W	4 Gang 2 Way Slimline Push Dimmer with Automatic Control Detection	1



DIM150W/UNI



LEDFWDP150/12W



LEDFWDP150/22W



LEDFWDP150/32W

Universal LED Dimmer Module

Code	Description	Min/Box
DIM150W/UNI	5W-150W Universal LED Dimmer Module	1



CED
ELECTRICAL
GROUP

44-48 FRESHWATER ROAD,
DAGENHAM, ESSEX RM8 1RX (UK)

020 8503 8500

020 8503 8900

www.cedelectrical.co.uk

sales@cedelectrical.co.uk